

Nevada Occupation and Employee Characteristics



Prepared By:
The Nevada State Demographer's Office
Erin Chamberlain, Intern
University of NV Reno MS/032
Reno, NV 89557
(775) 784-6352
jhardcas@unr.edu

Contents

Introduction and Explanation	3
Food Preparation and Service Occupations	5
Sales Workers, Retail and Personal Services	9
Personal Service Occupations	13
Cleaning and Building Service Occupations, Except Household	17
Handlers, Equipment Cleaners, Helpers, and Laborers	21
Construction Trades, Except Supervisors	25
Managers and Administrators	29
Mechanics and Repairers, Except Supervisors	33
Motor Vehicle Operators	37
Secretaries, Stenographers, and Typists	41
Teachers, Except Postsecondary	45
Management Related Occupations	49
Employment Projections	53
Appendix 1	54
Appendix 2	60
Appendix 3	62

Introduction and Explanation

The following information lists the largest occupational groups in Nevada and their general, family, transportation, and household characteristics. The information was gathered from the 1990 Census of Population and Housing Public Use Microdata Samples, Feb. 1995. The data was imported into Access and queried for the specific information (for a listing of the query specification see Appendix 3).

The data was first queried to find the most represented occupations in Nevada. (See Appendix 1 for a complete list of the occupations and Appendix 2 for the groupings we used in our searches). The following table lists the top twelve most common occupations in Nevada.

Occupational Code	Percentage	Occupation Description
433-444	9%	Food Preparation and Service Occupations
263-282	7%	Sales Workers, Retail and Personal Services
456-472	5%	Personal Service Occupations
448-455	5%	Cleaning and Building Service Occupations, Except Household
864-902	4%	Handlers, Equipment Cleaners, Helpers, and Laborers
563-612	4%	Construction Trades, Except Supervisors
22	4%	Managers and Administrators
505-552	4%	Mechanics and Repairers, Except Supervisors
803-822	3%	Motor Vehicle Operators
313-315	3%	Secretaries, Stenographers, and Typists
155-162	3%	Teachers, Except Postsecondary
23-42	3%	Management Related Occupations

Full Occupational Descriptions for the above groupings:

Food preparation and service occupations include Supervisors of food preparation and service occupations, bartenders, waiters and waitresses, cooks, food counter and fountain related occupations, food preparation kitchen workers, waiters' and waitresses' assistants, and miscellaneous food preparation occupations.

Sales workers, retail and personal services include sales counter clerks, cashiers, street and door-to-door sales workers, news vendors, and sales workers in motor vehicles and boats, apparel, shoes, furniture and home furnishings, radio, TV, hi-fi, and appliances, hardware and building supplies, parts, and other commodities.

Personal service occupations include personal service occupations supervisors, barbers, hairdressers and cosmetologists, amusement and recreation facilities attendants, guides, ushers, public transportation attendants, baggage porters and bellhops, welfare service aides, family child care providers, early childhood teacher's assistants, and child care workers.

Cleaning and building service occupations, except household, include cleaning and building service workers supervisors, maids and housemen, janitors and cleaners, elevator operators, and pest control occupations.

Handlers, equipment cleaners, helpers, and laborers include supervisors, mechanic and repairer helpers, construction and extractive occupation helpers, construction laborers, production helpers, garbage collectors, stevedores, stock handlers and baggers, machine feeders and offbearers, other freight, stock, and material handlers, garage and service station related occupations, vehicle washers and equipment cleaners, hand packers and packagers, and laborers except construction.

Construction trades, except supervisors, include brickmasons and stonemasons, tile setters, carpet installers, carpenters, and drywall installers.

Mechanics and repairers, except supervisors, include automobile mechanics, bus, truck and stationary engine mechanics, aircraft engine mechanics, small engine repairers, automobile body and related repairers, aircraft mechanics, except engine, heavy equipment mechanics, farm equipment mechanics, industrial machinery repairers, and machinery maintenance occupations.

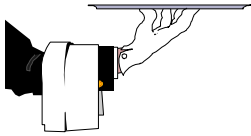
Motor vehicle operators include supervisors, truck drivers, driver-sales workers, bus drivers, taxicab drivers and chauffeurs, parking lot attendants, and motor transportation occupations not elsewhere classified.

Teachers, except postsecondary include prekindergarten and kindergarten teachers, elementary school teachers, secondary school teachers, special education teachers, and teachers not elsewhere classified.

Management related occupations include accountants and auditors, underwriters, other financial officers, management analysts, personnel, training, and labor relations specialists, farm products purchasing agents and buyers, wholesale and retail trade except farm products buyers, purchasing agents and buyers not elsewhere classified, business and promotion agents, construction inspectors, inspectors and compliance officers, except construction, and management related occupations not elsewhere classified.

Report Format

The layout of all of the forms is identical, and all of the tables and graphs are broken down by age. The first page gives the general information, which lists the percentage in each age category, the percent female, the average schooling, the average income, and the race and Hispanic origin percentages. The races listed are white, black, AEI, API, and other. AEI stands for American Indian, Eskimo, or Aleut. API stands for Asian or Pacific Islander. The second page starts the family information, which lists the marital status, family type, average number of children per household, and the number of workers in a family. The third page gives the transportation information, which lists the means of transportation to work, and the average travel time to work. The fourth page gives the household information, which is the number of householders for that occupation, the average household income, the tenure status, the average monthly rent, the average property value, the average monthly mortgage payment, and the mortgage status.

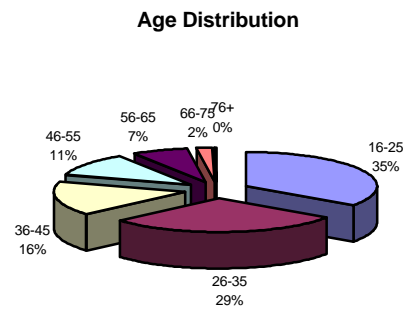


Food Preparation and Service Occupations

10% of all people employed in Nevada are in Food Preparation and Service Occupations

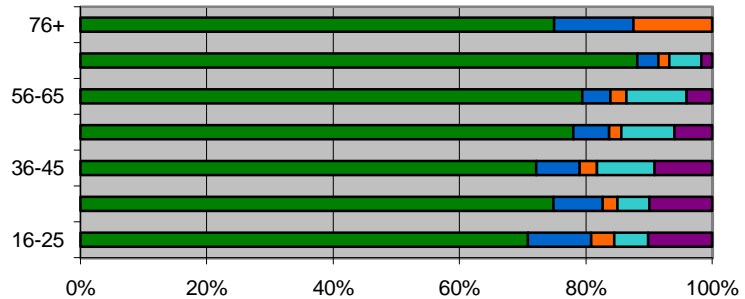
General Information

Age	Total	Females	Average Schooling	Average Income
16-25	35%	43%	12th Grade, no diploma	\$7,498.87
26-35	29%	52%	High School Graduate, GED	\$12,665.00
36-45	16%	57%	High School Graduate, GED	\$13,755.89
46-55	11%	62%	12th Grade, no diploma	\$13,413.73
56-65	7%	59%	12th Grade, no diploma	\$12,979.25
66-75	2%	49%	12th Grade, no diploma	\$8,963.61
76+	0%	75%	10th Grade	\$3,576.63



Race

Age	Race				
	White	Black	AEI	API	Other
16-25	71%	10%	4%	5%	10%
26-35	75%	8%	2%	5%	10%
36-45	72%	7%	3%	9%	9%
46-55	78%	6%	2%	8%	6%
56-65	79%	5%	3%	10%	4%
66-75	88%	3%	2%	5%	2%
76+	75%	13%	13%	0%	0%



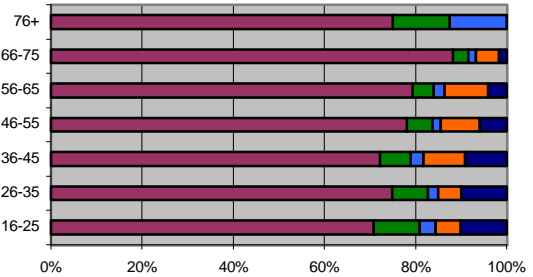
Age	16-25	26-35	36-45	46-55	56-65	66-75	76+
Hispanic Origin	22.3%	18.4%	17.6%	17.6%	11.6%	6.8%	0.0%

Family Information

Marital Status

Age	Married	Widowed	Divorced	Separated	Never Married
16-25	71%	10%	4%	5%	10%
26-35	75%	8%	2%	5%	10%
36-45	72%	7%	3%	9%	9%
46-55	78%	6%	2%	8%	6%
56-65	79%	5%	3%	10%	4%
66-75	88%	3%	2%	5%	2%
76+	75%	13%	13%	0%	0%

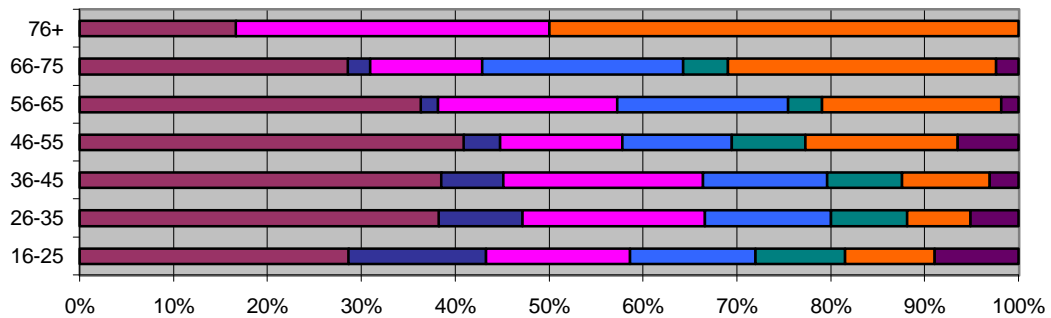
Marital Status



Family Type

Age	Married-Couple family household	Male householder (family)	Female Householder (Family)	Male Living Alone	Male Not Living Alone	Female Living Alone	Female Not Living Alone
16-25	29%	15%	15%	13%	10%	10%	9%
26-35	38%	9%	19%	13%	8%	7%	5%
36-45	38%	7%	21%	13%	8%	9%	3%
46-55	41%	4%	13%	12%	8%	16%	6%
56-65	36%	2%	19%	18%	4%	19%	2%
66-75	29%	2%	12%	21%	5%	29%	2%
76+	17%	0%	33%	0%	0%	50%	0%

Household Family Type

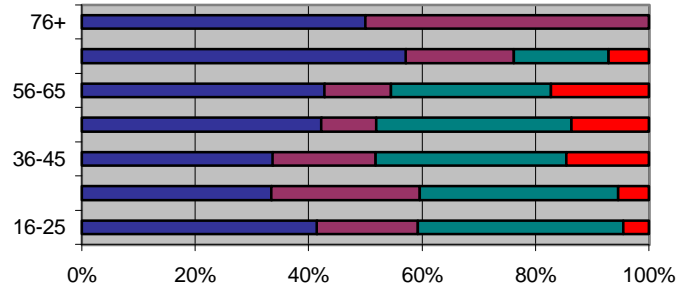


Age	16-25	26-35	36-45	46-55	56-65	66-75	76+
Average Number of Children Per Household	0.58	1.11	1.01	0.33	0.18	0.00	0.17

Workers in the Family

Workers in the Family in 1989

Age	N/A	1 Worker	2 Workers	3+ Workers
16-25	41%	18%	36%	4%
26-35	33%	26%	35%	5%
36-45	34%	18%	34%	15%
46-55	42%	10%	34%	14%
56-65	43%	12%	28%	17%
66-75	57%	19%	17%	7%
76+	50%	50%	0%	0%

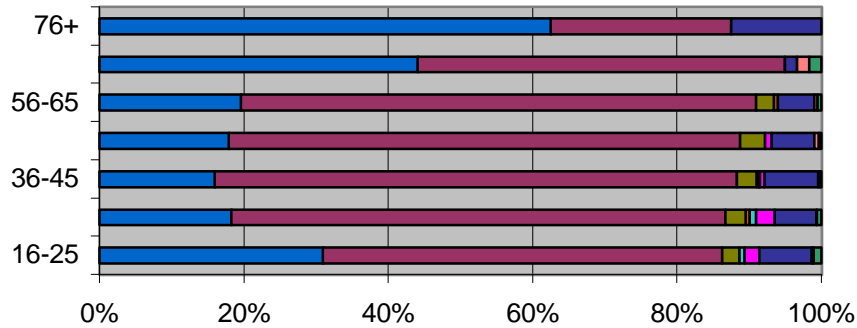


Transportation Information

Means of Transportation to Work

Age	N/A	Car, Truck, or Van	Bus or Trolley	Taxi	Motorcycle	Bicycle	Walked	Worked at Home	Other
16-25	31%	55%	2%	0%	1%	2%	7%	0%	1%
26-35	18%	68%	3%	0%	1%	3%	6%	0%	1%
36-45	16%	72%	3%	0%	0%	1%	7%	0%	0%
46-55	18%	71%	3%	0%	0%	1%	6%	1%	0%
56-65	20%	71%	3%	1%	0%	0%	5%	1%	1%
66-75	44%	51%	0%	0%	0%	0%	2%	2%	2%
76+	63%	25%	0%	0%	0%	0%	13%	0%	0%

Means of Transportation



Age	16-25	26-35	36-45	46-55	56-65	66-75	76+
Average Travel Time to Work (minutes)	11.78	14.28	14.01	16.15	14.80	19.17	6.22

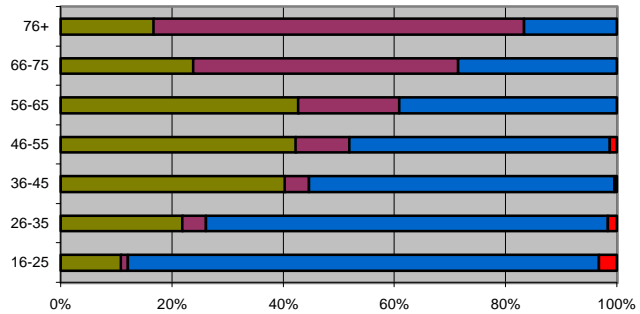
Household Information

Age	16-25	26-35	36-45	46-55	56-65	66-75	76+
Number of Householders	15.6%	44.5%	48.0%	48.3%	55.3%	71.2%	75.0%
Average Household Income	\$19,814.96	\$26,554.84	\$30,052.22	\$30,046.63	\$32,215.50	\$24,250.57	\$19,311.50

Tenure

Age	Owned with mortgage or loan	Owned free and clear	Rented for cash rent	No cash rent
16-25	11%	1%	85%	3%
26-35	22%	4%	72%	2%
36-45	40%	4%	55%	0%
46-55	42%	10%	47%	1%
56-65	43%	18%	39%	0%
66-75	24%	48%	29%	0%
76+	17%	67%	17%	0%

Tenure

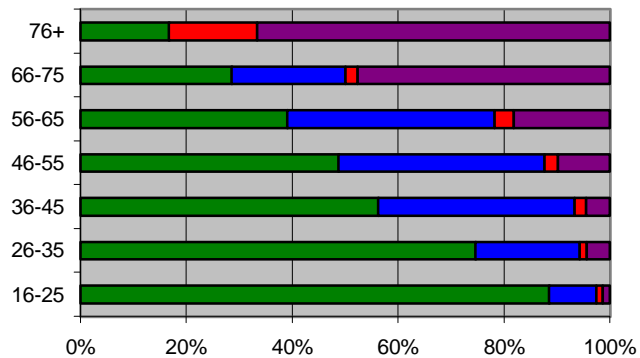


Age	16-25	26-35	36-45	46-55	56-65	66-75	76+
Average Monthly Rent	\$400-\$424	\$400-\$424	\$400-\$424	\$400-\$424	\$375-\$399	\$350-\$374	\$125-\$149
Average Property Value	\$50,000-\$54,999	\$55,000-\$59,999	\$55,000-\$59,999	\$60,000-\$64,999	\$55,000-\$59,999	\$55,000-\$59,999	\$35,000-\$39,999
Avg. Monthly Mortgage Payment	\$452.00	\$489.00	\$435.00	\$470.00	\$342.00	\$341.00	\$420.00

Mortgage Status

Age	N/A	Mortgage deed of trust, or similar debt	Contract to purchase	None
16-25	89%	9%	1%	1%
26-35	75%	20%	1%	4%
36-45	56%	37%	2%	4%
46-55	49%	39%	3%	10%
56-65	39%	39%	4%	18%
66-75	29%	21%	2%	48%
76+	17%	0%	17%	67%

Mortgage Status



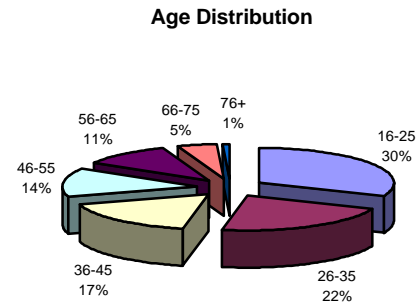


Sales Workers, Retail and Personal Services

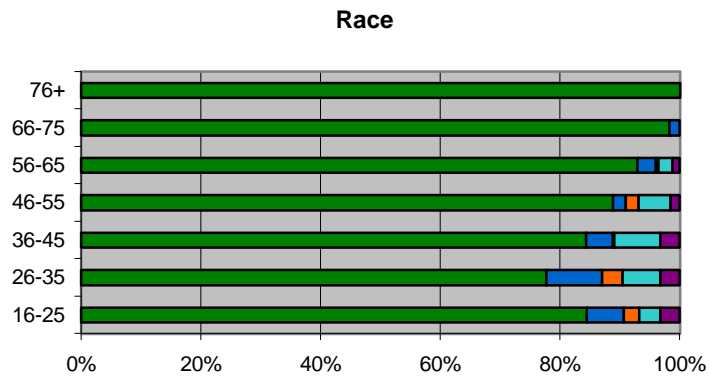
7% of all people employed in Nevada are in Sales, Retail, and Personal Services

General Information

Age	Total	Females	Average Schooling	Average Income
16-25	26%	70%	12th Grade, no diploma	\$6,606.25
26-35	18%	76%	High School Graduate, GED	\$12,608.02
36-45	14%	73%	High School Graduate, GED	\$16,524.84
46-55	11%	78%	High School Graduate, GED	\$14,332.67
56-65	9%	69%	High School Graduate, GED	\$12,927.57
66-75	4%	67%	12th Grade, no diploma	\$8,640.85
76+	1%	78%	11th Grade	\$7,804.28



Age	Race				
	White	Black	AEI	API	Other
16-25	84%	6%	3%	4%	3%
26-35	78%	9%	3%	6%	3%
36-45	84%	4%	0%	8%	3%
46-55	89%	2%	2%	5%	2%
56-65	93%	3%	0%	2%	1%
66-75	98%	2%	0%	0%	0%
76+	100%	0%	0%	0%	0%



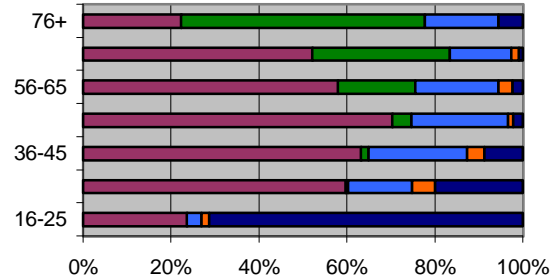
Age	16-25	26-35	36-45	46-55	56-65	66-75	76+
Hispanic Origin	9.4%	7.8%	8.2%	6.2%	4.3%	2.6%	0.0%

Family Information

Marital Status

Age	Married	Widowed	Divorced	Separated	Never Married
16-25	24%	0%	3%	2%	71%
26-35	60%	1%	15%	5%	20%
36-45	63%	2%	23%	4%	9%
46-55	70%	4%	22%	1%	2%
56-65	58%	18%	19%	3%	2%
66-75	52%	31%	14%	2%	1%
76+	22%	56%	17%	0%	6%

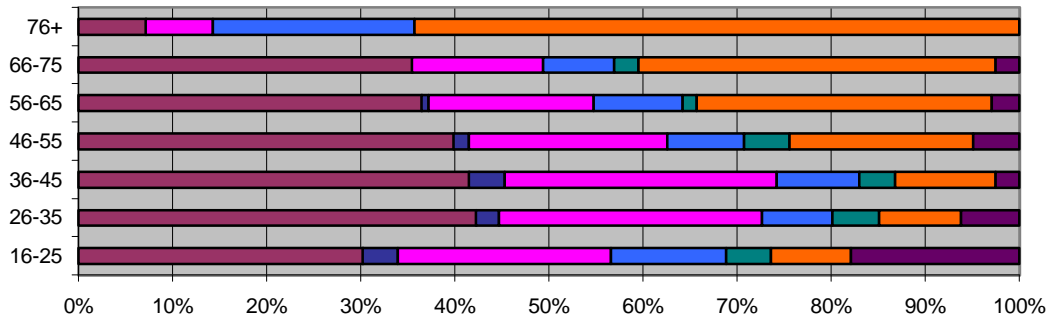
Marital Status



Family Type

Age	Married-Couple family household	Male householder (family)	Female Householder (Family)	Male Living Alone	Male Not Living Alone	Female Living Alone	Female Not Living Alone
16-25	30%	4%	23%	12%	5%	8%	18%
26-35	42%	2%	28%	7%	5%	9%	6%
36-45	42%	4%	29%	9%	4%	11%	3%
46-55	40%	2%	21%	8%	5%	20%	5%
56-65	36%	1%	18%	9%	1%	31%	3%
66-75	35%	0%	14%	8%	3%	38%	3%
76+	7%	0%	7%	21%	0%	64%	0%

Household Family Type

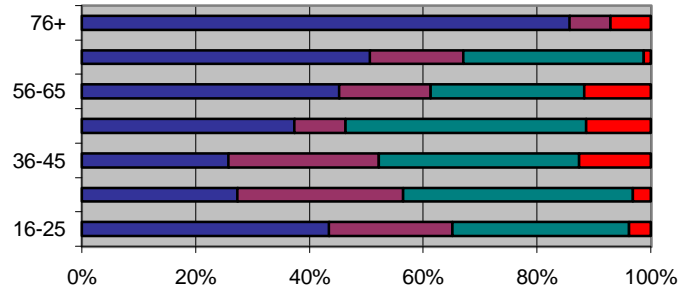


Age	16-25	26-35	36-45	46-55	56-65	66-75	76+
Average Number of Children Per Household	0.58	1.25	0.95	0.32	0.04	0.03	0.00

Workers in the Family in 1989

Age	N/A	1 Worker	2 Workers	3+ Workers
16-25	43%	22%	31%	4%
26-35	27%	29%	40%	3%
36-45	26%	26%	35%	13%
46-55	37%	9%	42%	11%
56-65	45%	16%	27%	12%
66-75	51%	16%	32%	1%
76+	86%	7%	0%	7%

Workers in the Family

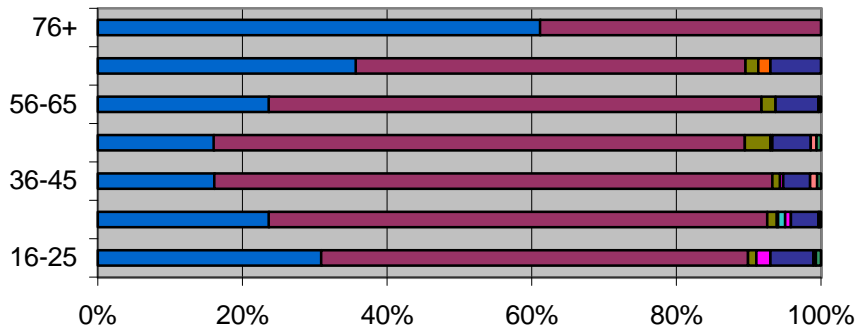


Transportation Information

Means of Transportation to Work

Age	N/A	Car, Truck, or Van	Bus or Trolley	Taxi	Motorcycle	Bicycle	Walked	Worked at Home	Other
16-25	31%	59%	1%	0%	0%	2%	6%	0%	1%
26-35	24%	69%	1%	0%	1%	1%	4%	0%	0%
36-45	16%	77%	1%	0%	0%	0%	4%	1%	0%
46-55	17%	78%	4%	0%	0%	0%	6%	1%	1%
56-65	24%	68%	2%	0%	0%	0%	6%	0%	0%
66-75	36%	54%	2%	2%	0%	0%	7%	0%	0%
76+	61%	39%	0%	0%	0%	0%	0%	0%	0%

Means of Transportation

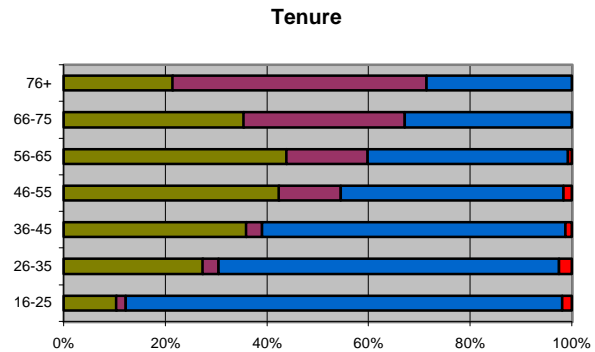


Age	16-25	26-35	36-45	46-55	56-65	66-75	76+
Average Travel Time to Work (minutes)	10.61	12.45	14.61	14.47	13.74	9.98	5.08

Household Information

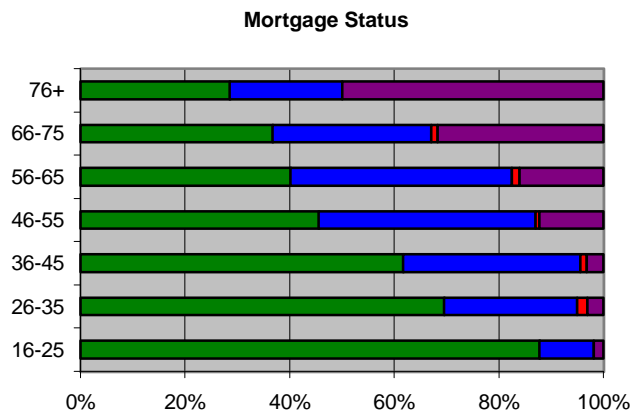
Age	16-25	26-35	36-45	46-55	56-65	66-75	76+
Number of Householders	14.3%	30.7%	39.4%	38.1%	53.9%	68.7%	77.8%
Average Household Income	\$21,721.35	\$27,525.02	\$34,524.94	\$33,468.67	\$28,611.20	\$24,589.89	\$19,387.23

Age	Owned with mortgage or loan	Owned free and clear	Rented for cash rent	No cash rent
16-25	10%	2%	86%	2%
26-35	27%	3%	67%	2%
36-45	36%	3%	60%	1%
46-55	42%	12%	44%	2%
56-65	44%	16%	39%	1%
66-75	35%	32%	33%	0%
76+	21%	50%	29%	0%



Age	16-25	26-35	36-45	46-55	56-65	66-75	76+
Average Monthly Rent	\$450-\$474	\$500-\$524	\$500-\$524	\$475-\$499	\$425-\$449	\$375-\$399	\$375-\$399
Average Property Value	\$50,000-\$54,999	\$60,000-\$64,999	\$65,000-\$69,999	\$65,000-\$69,999	\$70,000-\$74,999	\$65,000-\$69,999	\$55,000-\$59,999
Avg. Monthly Mortgage Payment	\$368.98	\$697.54	\$594.66	\$491.44	\$451.66	\$376.84	\$533.00

Age	N/A	Mortgage deed of trust, or similar debt	Contract to purchase	None
16-25	88%	10%	0%	2%
26-35	70%	25%	2%	3%
36-45	62%	34%	1%	3%
46-55	46%	41%	1%	12%
56-65	40%	42%	1%	16%
66-75	37%	30%	1%	32%
76+	29%	21%	0%	50%



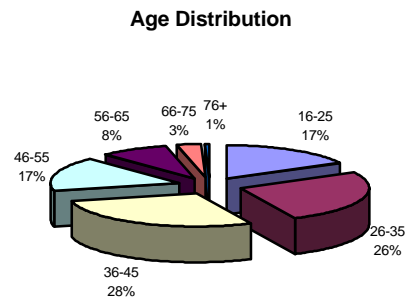


Personal Service Occupations

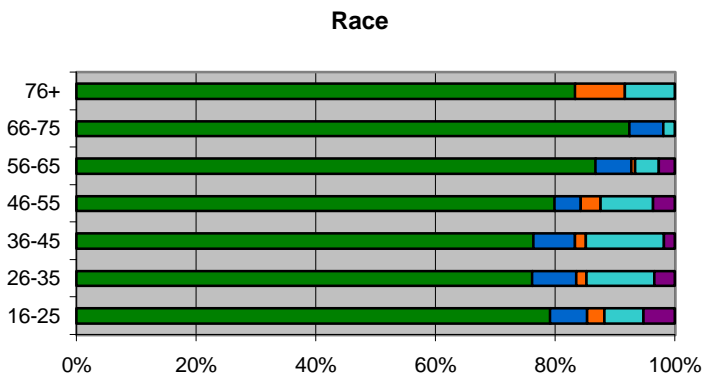
5% of all people employed in Nevada are in Personal Service Occupations

General Information

Age	Total	Females	Average Schooling	Average Income
16-25	17%	56%	High School Graduate, GED	\$8,308.57
26-35	26%	56%	Some College, but no Degree	\$16,428.00
36-45	28%	54%	High School Graduate, GED	\$19,683.68
46-55	17%	46%	High School Graduate, GED	\$19,296.09
56-65	8%	47%	12th Grade, no diploma	\$17,697.26
66-75	3%	28%	High School Graduate, GED	\$15,457.02
76+	1%	67%	12th Grade, no diploma	\$5,322.21



Age	Race				
	White	Black	AEI	API	Other
16-25	79%	6%	3%	7%	5%
26-35	76%	7%	2%	11%	3%
36-45	76%	7%	2%	13%	2%
46-55	80%	4%	3%	9%	4%
56-65	87%	6%	1%	4%	3%
66-75	92%	6%	0%	2%	0%
76+	83%	0%	8%	8%	0%

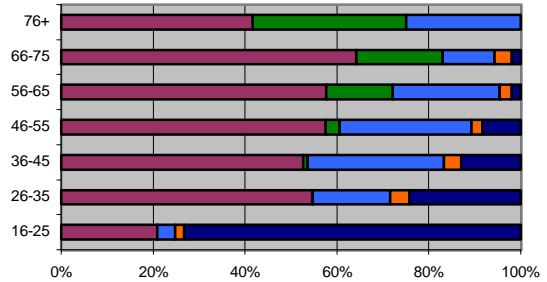


Age	16-25	26-35	36-45	46-55	56-65	66-75	76+
Hispanic Origin	13.4%	8.0%	6.6%	9.4%	6.0%	3.8%	16.7%

Family Information

Marital Status

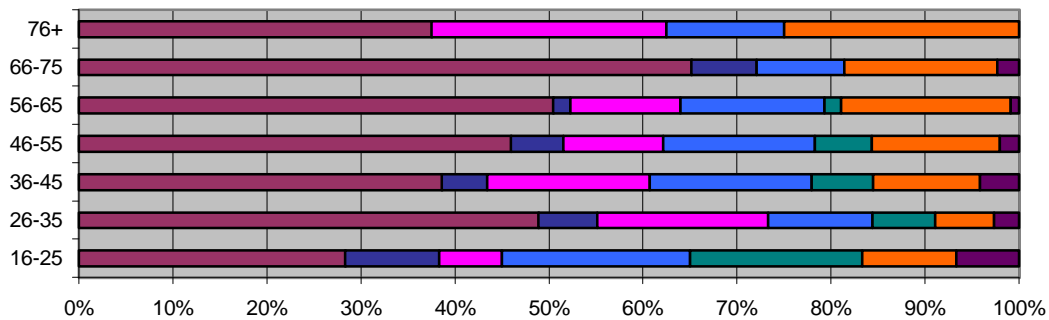
Marital Status					
Age	Married	Widowed	Divorced	Separated	Never Married
16-25	21%	0%	4%	2%	73%
26-35	55%	0%	17%	4%	24%
36-45	53%	1%	30%	4%	13%
46-55	58%	3%	29%	2%	8%
56-65	58%	15%	23%	3%	2%
66-75	64%	19%	11%	4%	2%
76+	42%	33%	25%	0%	0%



Family Type

Age	Family Type						
	Married-Couple family household	Male householder (family)	Female Householder (Family)	Male Living Alone	Male Not Living Alone	Female Living Alone	Female Not Living Alone
16-25	28%	10%	7%	20%	18%	10%	7%
26-35	49%	6%	18%	11%	7%	6%	3%
36-45	39%	5%	17%	17%	7%	11%	4%
46-55	46%	6%	11%	16%	6%	14%	2%
56-65	50%	2%	12%	15%	2%	18%	1%
66-75	65%	7%	0%	9%	0%	16%	2%
76+	38%	0%	25%	13%	0%	25%	0%

Household Family Type

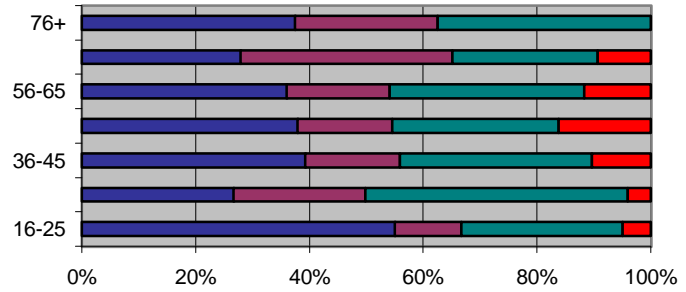


Age	16-25	26-35	36-45	46-55	56-65	66-75	76+
Average Number of Children Per Household	0.35	1.00	0.72	0.28	0.06	0.14	0.00

Workers in the Family in 1989

Age	N/A	1 Worker	2 Workers	3+ Workers
16-25	55%	12%	28%	5%
26-35	27%	23%	46%	4%
36-45	39%	17%	34%	10%
46-55	38%	17%	29%	16%
56-65	36%	18%	34%	12%
66-75	28%	37%	26%	9%
76+	38%	25%	38%	0%

Workers in the Family

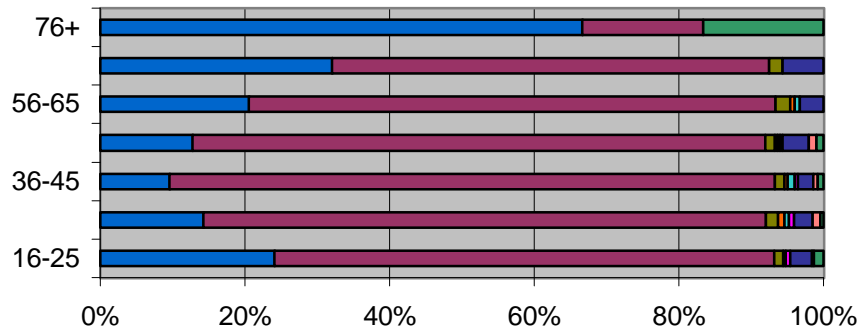


Transportation Information

Means of Transportation to Work

Age	N/A	Car, Truck, or Van	Bus or Trolley	Taxi	Motorcycle	Bicycle	Walked	Worked at Home	Other
16-25	24%	69%	1%	0%	0%	1%	3%	0%	1%
26-35	14%	78%	2%	1%	1%	1%	3%	1%	0%
36-45	10%	84%	1%	0%	1%	0%	2%	1%	1%
46-55	13%	79%	1%	0%	0%	0%	4%	1%	1%
56-65	21%	73%	2%	1%	1%	0%	3%	0%	0%
66-75	32%	60%	2%	0%	0%	0%	6%	0%	0%
76+	67%	17%	0%	0%	0%	0%	0%	0%	17%

Means of Transportation



Age	16-25	26-35	36-45	46-55	56-65	66-75	76+
Average Travel Time to Work (minutes)	22.69	16.61	21.29	21.49	16.31	22.77	15.00

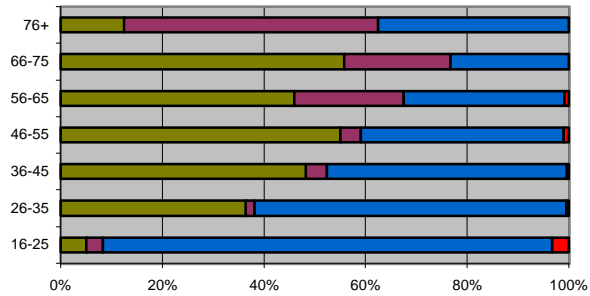
Household Information

Age	16-25	26-35	36-45	46-55	56-65	66-75	76+
Number of Householders	19.5%	48.7%	57.7%	66.2%	73.5%	81.1%	66.7%
Average Household Income	\$23,835.68	\$31,270.70	\$34,889.27	\$34,455.04	\$33,018.90	\$35,837.79	\$24,892.08

Tenure

Age	Owned with mortgage or loan	Owned free and clear	Rented for cash rent	No cash rent
16-25	5%	3%	88%	3%
26-35	36%	2%	61%	0%
36-45	48%	4%	47%	0%
46-55	55%	4%	40%	1%
56-65	46%	22%	32%	1%
66-75	56%	21%	23%	0%
76+	13%	50%	38%	0%

Tenure

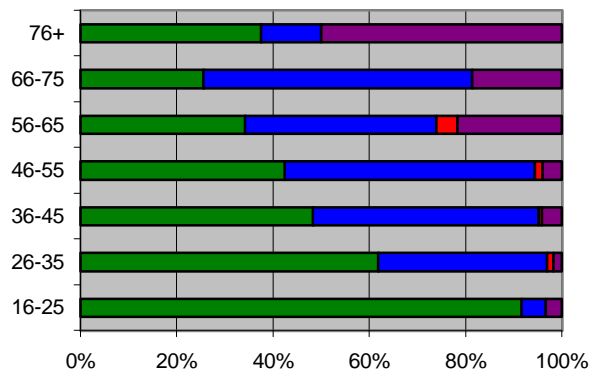


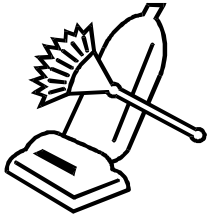
Age	16-25	26-35	36-45	46-55	56-65	66-75	76+
Average Monthly Rent	\$4540-\$474	\$425-\$449	\$4540-\$474	\$4540-\$474	\$400-\$424	\$475-\$499	\$375-\$399
Average Property Value	\$65,000-\$69,999	\$65,000-\$69,999	\$70,000-\$74,999	\$75,000-\$79,999	\$65,000-\$69,999	\$80,000-\$89,999	\$55,000-\$59,999
Avg. Monthly Mortgage Payment	\$397.67	\$675.07	\$668.50	\$562.12	\$533.37	\$399.34	\$236.00

Mortgage Status

Age	N/A	Mortgage deed of trust, or similar debt	Contract to purchase	None
16-25	92%	5%	0%	3%
26-35	62%	35%	1%	2%
36-45	48%	47%	1%	4%
46-55	42%	52%	2%	4%
56-65	34%	40%	5%	22%
66-75	26%	56%	0%	19%
76+	38%	13%	0%	50%

Mortgage Status



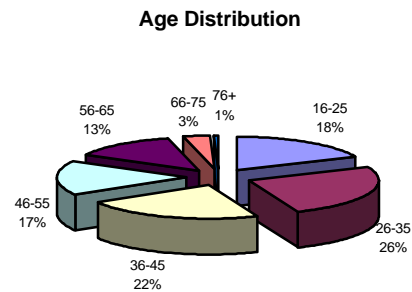


Cleaning and Building Service Occupations, Except Household

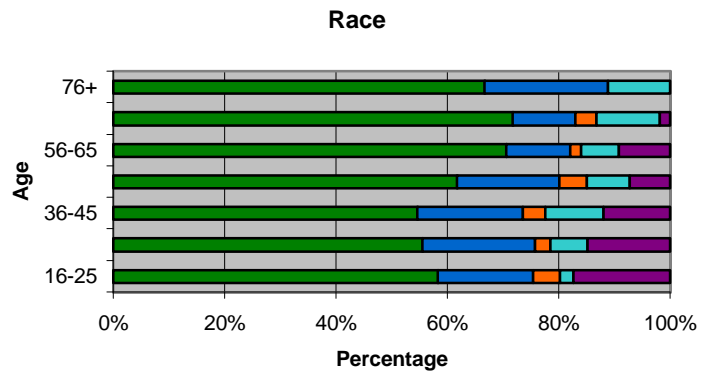
5% of all people employed in Nevada are in Cleaning and Building Service Occupations

General Information

Age	Total	Females	Average Schooling	Average Income
16-25	18%	54%	11th Grade	\$7,029.29
26-35	26%	53%	12th Grade, no Diploma	\$11,940.01
36-45	22%	56%	12th Grade, no Diploma	\$13,360.46
46-55	17%	56%	11th Grade	\$14,550.55
56-65	13%	43%	11th Grade	\$13,529.08
66-75	3%	40%	11th Grade	\$8,993.53
76+	1%	33%	10th Grade	\$8,516.28



Age	Race				
	White	Black	AEI	API	Other
16-25	58%	17%	5%	2%	17%
26-35	56%	20%	3%	7%	15%
36-45	55%	19%	4%	11%	12%
46-55	62%	18%	5%	8%	7%
56-65	71%	12%	2%	7%	9%
66-75	72%	11%	4%	11%	2%
76+	67%	22%	0%	11%	0%



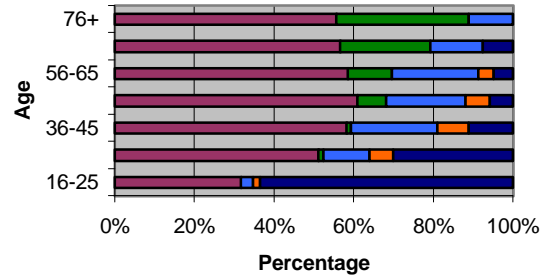
Age	16-25	26-35	36-45	46-55	56-65	66-75	76+
Hispanic Origin	31.9%	29.9%	23.3%	19.5%	18.8%	7.5%	0.0%

Family Information

Marital Status

Age	Married	Widowed	Divorced	Separated	Never Married
16-25	32%	0%	3%	2%	64%
26-35	51%	1%	12%	6%	30%
36-45	58%	1%	22%	8%	11%
46-55	61%	7%	20%	6%	6%
56-65	58%	11%	22%	4%	5%
66-75	57%	23%	13%	0%	8%
76+	56%	33%	11%	0%	0%

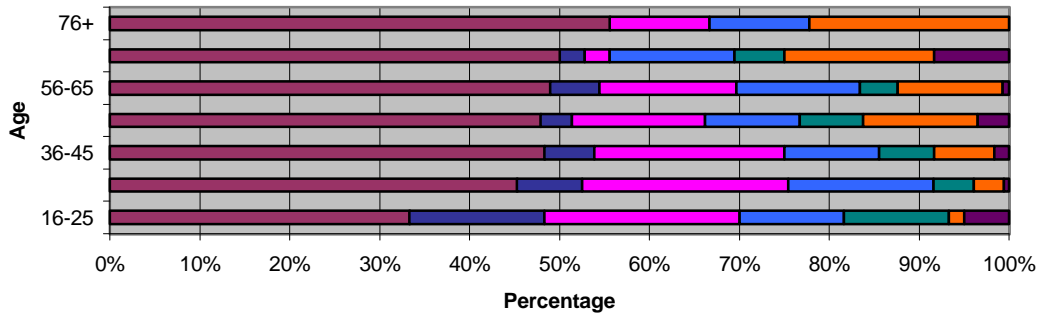
Marital Status



Family Type

Age	Married-Couple family	Male householder (family)	Female Householder (Family)	Male Living Alone	Male Not Living Alone	Female Living Alone	Female Not Living Alone
16-25	33%	15%	22%	12%	12%	2%	5%
26-35	45%	7%	23%	16%	4%	3%	1%
36-45	48%	6%	21%	11%	6%	7%	2%
46-55	48%	4%	15%	11%	7%	13%	4%
56-65	49%	6%	15%	14%	4%	12%	1%
66-75	50%	3%	3%	14%	6%	17%	8%
76+	56%	0%	11%	11%	0%	22%	0%

Household Family Type

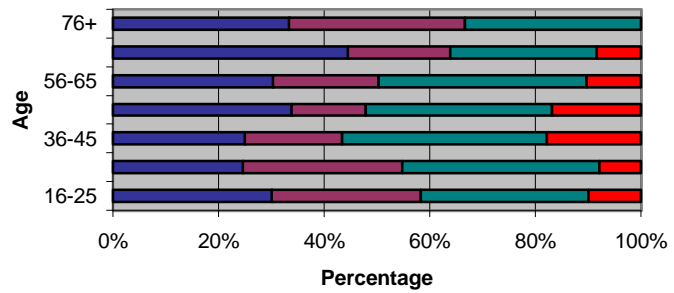


Age	16-25	26-35	36-45	46-55	56-65	66-75	76+
Average Number of Children Per Household	0.90	1.48	1.24	0.27	0.10	0.00	0.00

Workers in the Family in 1989

Age	N/A	1 Worker	2 Workers	3+ Workers
16-25	30%	28%	32%	10%
26-35	25%	30%	37%	8%
36-45	25%	18%	39%	18%
46-55	34%	14%	35%	17%
56-65	30%	20%	39%	10%
66-75	44%	19%	28%	8%
76+	33%	33%	33%	0%

Workers in the Family

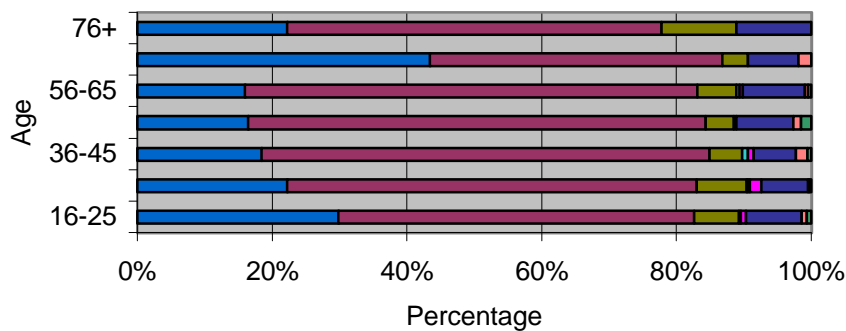


Transportation Information

Means of Transportation to Work

Age	N/A	Car, Truck, or Van	Bus or Trolley	Taxi	Motorcycle	Bicycle	Walked	Worked at Home	Other
16-25	30%	53%	7%	0%	0%	1%	8%	1%	1%
26-35	22%	61%	7%	0%	0%	2%	7%	0%	0%
36-45	18%	66%	5%	0%	1%	1%	6%	2%	1%
46-55	16%	68%	4%	0%	0%	0%	8%	1%	2%
56-65	16%	67%	6%	0%	0%	0%	9%	0%	0%
66-75	43%	43%	4%	0%	0%	0%	8%	2%	0%
76+	22%	56%	11%	0%	0%	0%	11%	0%	0%

Means of Transportation



Age	16-25	26-35	36-45	46-55	56-65	66-75	76+
Average Travel Time to Work (minutes)	17.51	22.66	25.41	19.54	25.77	18.69	29.33

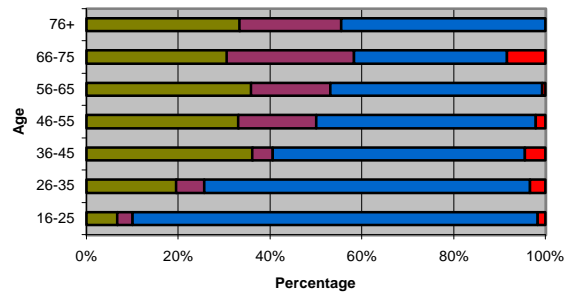
Household Information

Age	16-25	26-35	36-45	46-55	56-65	66-75	76+
Number of Householders	20.8%	44.2%	51.1%	54.4%	70.0%	67.9%	100.0%
Average Household Income	\$21,092.81	\$24,693.27	\$27,050.99	\$28,889.46	\$29,612.31	\$24,079.99	\$14,995.72

Tenure

Age	Owned with mortgage or loan	Owned free and clear	Rented for cash rent	No cash rent
16-25	7%	3%	88%	2%
26-35	20%	6%	71%	3%
36-45	36%	4%	55%	4%
46-55	33%	17%	48%	2%
56-65	36%	17%	46%	1%
66-75	31%	28%	33%	8%
76+	33%	22%	44%	0%

Tenure

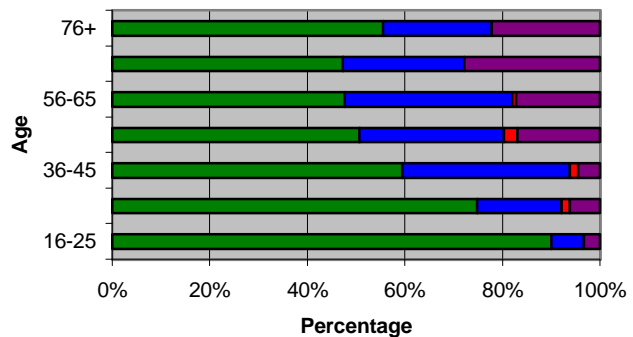


Age	16-25	26-35	36-45	46-55	56-65	66-75	76+
Average Monthly Rent	\$325-\$349	\$375-\$399	\$375-\$399	\$350-\$374	\$325-\$349	\$250-\$274	\$300-\$324
Average Property Value	\$40,000-\$44,999	\$45,000-\$49,999	\$50,000-\$54,999	\$50,000-\$54,999	\$55,000-\$59,999	\$55,000-\$59,999	\$80,000-\$89,999
Avg. Monthly Mortgage Payment	\$491.50	\$526.40	\$520.40	\$374.99	\$453.12	\$338.71	\$254.00

Mortgage Status

Age	N/A	Mortgage deed of trust, or similar debt	Contract to purchase	None
16-25	90%	7%	0%	3%
26-35	75%	17%	2%	6%
36-45	59%	34%	2%	4%
46-55	51%	30%	3%	17%
56-65	48%	34%	1%	17%
66-75	47%	25%	0%	28%
76+	56%	22%	0%	22%

Mortgage Status





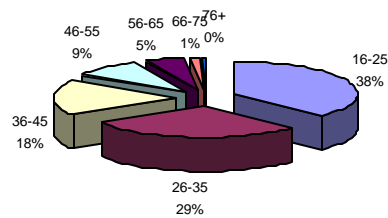
Handlers, Equipment Cleaners, Helpers, and Laborers

4% of all people employed in Nevada are Handlers, Equipment Cleaners, Helpers, and Laborers

General Information

Age	Total	Females	Average Schooling	Average Income
16-25	37%	14%	12th Grade, no Diploma	\$8,693.15
26-35	29%	20%	High School Graduate, GED	\$17,185.18
36-45	18%	21%	High School Graduate, GED	\$20,328.04
46-55	9%	25%	High School Graduate, GED	\$19,127.59
56-65	5%	18%	12th Grade, no Diploma	\$17,599.90
66-75	1%	14%	High School Graduate, GED	\$11,242.47
76+	0%	29%	10th Grade	\$9,569.47

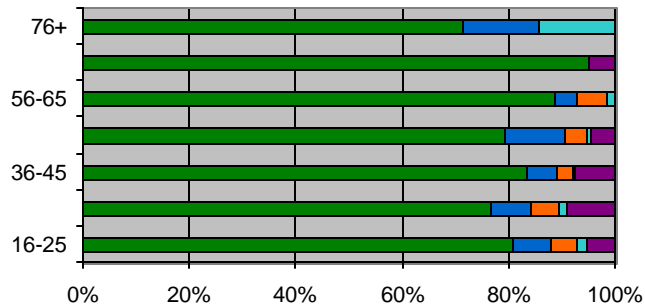
Age Distribution



Race

Age	White	Black	AEI	API	Other
16-25	81%	7%	5%	2%	5%
26-35	77%	8%	5%	1%	9%
36-45	84%	6%	3%	0%	8%
46-55	79%	11%	4%	1%	4%
56-65	89%	4%	6%	1%	0%
66-75	95%	0%	0%	0%	5%
76+	71%	14%	0%	14%	0%

Race



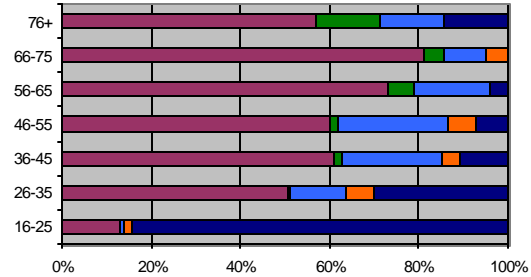
Age	16-25	26-35	36-45	46-55	56-65	66-75	76+
Hispanic Origin	14.2%	19.1%	14.6%	9.6%	5.6%	9.5%	0.0%

Family Information

Marital Status

Age	Married	Widowed	Divorced	Separated	Never Married
16-25	13%	0%	1%	2%	84%
26-35	50%	1%	13%	6%	30%
36-45	61%	2%	22%	4%	11%
46-55	60%	1%	25%	6%	7%
56-65	73%	6%	17%	0%	4%
66-75	81%	5%	10%	5%	0%
76+	57%	14%	14%	0%	14%

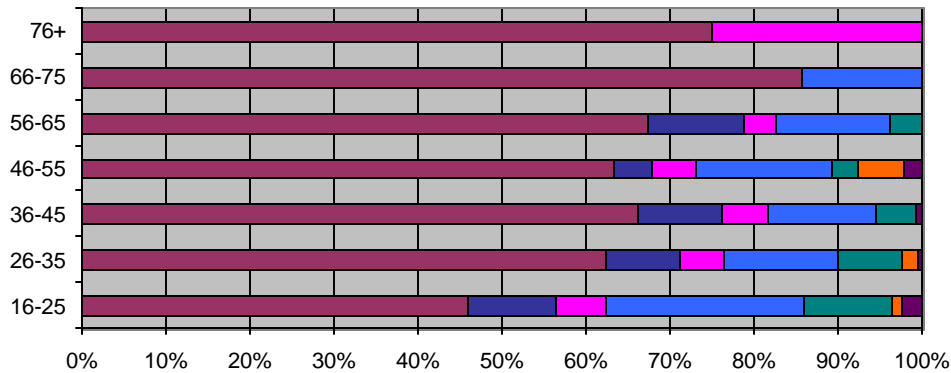
Marital Status



Family Type

Age	Married-Couple family household	Male householder (family)	Female Householder (Family)	Male Living Alone	Male Not Living Alone	Female Living Alone	Female Not Living Alone
16-25	46%	11%	6%	24%	11%	1%	2%
26-35	62%	9%	5%	14%	8%	2%	0%
36-45	66%	10%	6%	13%	5%	0%	1%
46-55	63%	4%	5%	16%	3%	5%	2%
56-65	67%	12%	4%	13%	4%	0%	0%
66-75	86%	0%	0%	14%	0%	0%	0%
76+	75%	0%	25%	0%	0%	0%	0%

Household Family Type

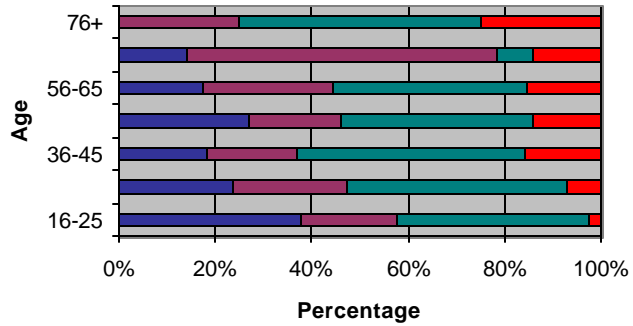


Age	16-25	26-35	36-45	46-55	56-65	66-75	76+
Average Number of Children Per Household	0.58	1.34	1.38	0.38	0.12	0.07	0.00

Workers in the Family in 1989

Age	N/A	1 Worker	2 Workers	3+ Workers
16-25	38%	20%	40%	2%
26-35	24%	24%	46%	7%
36-45	18%	18%	47%	16%
46-55	27%	19%	40%	14%
56-65	17%	27%	40%	15%
66-75	14%	64%	7%	14%
76+	0%	25%	50%	25%

Workers in the Family

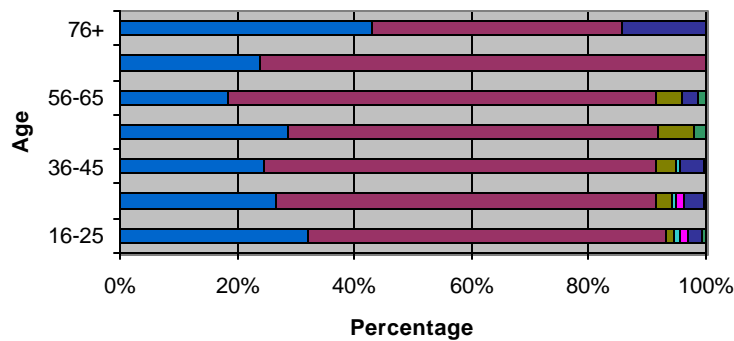


Transportation Information

Means of Transportation to Work

Age	N/A	Car, Truck, or Van	Bus or Trolley	Taxi	Motorcycle	Bicycle	Walked	Worked at Home	Other
16-25	32%	61%	1%	0%	1%	1%	2%	0%	1%
26-35	27%	65%	3%	0%	1%	1%	4%	0%	0%
36-45	25%	67%	3%	0%	0%	0%	4%	0%	0%
46-55	29%	63%	6%	0%	0%	0%	0%	0%	2%
56-65	18%	73%	4%	0%	0%	0%	3%	0%	1%
66-75	24%	76%	0%	0%	0%	0%	0%	0%	0%
76+	43%	43%	0%	0%	0%	0%	14%	0%	0%

Means of Transportation



Age	16-25	26-35	36-45	46-55	56-65	66-75	76+
Average Travel Time to Work (minutes)	19.51	24.47	26.58	29.13	22.84	17.79	11.67

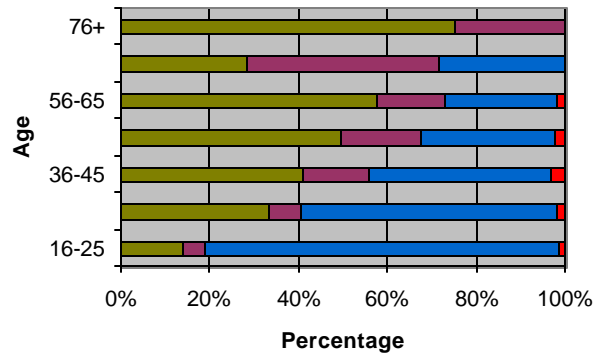
Household Information

Age	16-25	26-35	36-45	46-55	56-65	66-75	76+
Number of Householders	15.7%	51.2%	62.5%	68.4%	73.2%	66.7%	57.1%
Average Household Income	\$23,813.14	\$31,514.67	\$36,645.78	\$34,840.16	\$35,877.55	\$34,542.31	\$33,266.50

Tenure

Age	Owned with mortgage or loan	Owned free and clear	Rented for cash rent	No cash rent
16-25	14%	5%	80%	1%
26-35	33%	7%	58%	2%
36-45	41%	15%	41%	3%
46-55	49%	18%	30%	2%
56-65	58%	15%	25%	2%
66-75	29%	43%	29%	0%
76+	75%	25%	0%	0%

Tenure

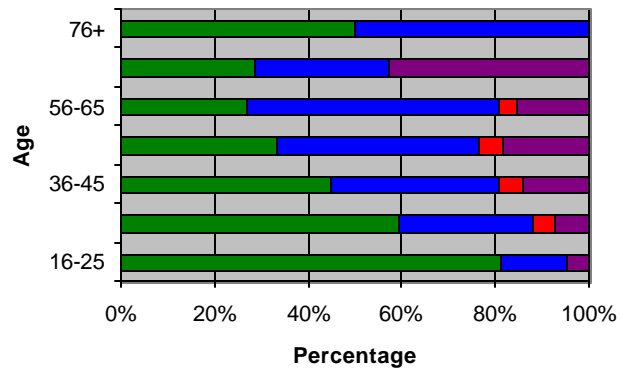


Age	16-25	26-35	36-45	46-55	56-65	66-75	76+
Average Monthly Rent	\$350-\$374	\$400-\$424	\$425-\$449	\$450-\$474	\$400-\$424	\$400-\$424	NA
Average Property Value	\$45,000-\$49,999	\$45,000-\$49,999	\$60,000-\$64,999	\$55,000-\$59,999	\$60,000-\$64,999	\$55,000-\$59,999	\$60,000-\$64,999
Avg. Monthly Mortgage Payment	\$483.92	\$538.47	\$595.47	\$462.87	\$354.61	\$397.00	\$342.50

Mortgage Status

Age	N/A	Mortgage deed of trust, or similar debt	Contract to purchase	None
16-25	81%	14%	0%	5%
26-35	59%	29%	5%	7%
36-45	45%	36%	5%	14%
46-55	33%	43%	5%	18%
56-65	27%	54%	4%	15%
66-75	29%	29%	0%	43%
76+	50%	50%	0%	0%

Mortgage Status



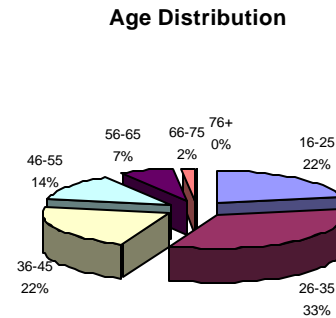


Construction Trades, Except Supervisors

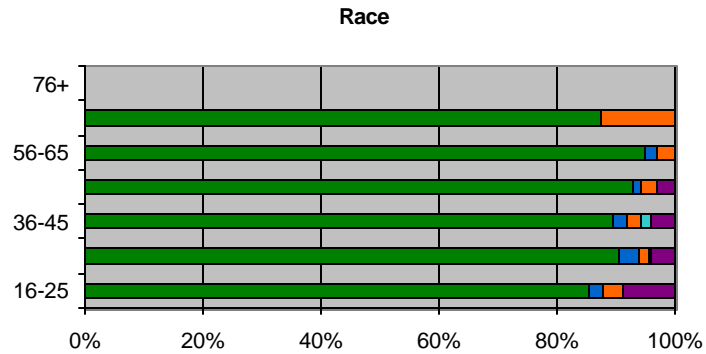
4% of all employed people in Nevada are in Construction Trades

General Information

Age	Total	Females	Average Schooling	Average Income
16-25	22%	3%	12th Grade, no Diploma	\$11,606.74
26-35	34%	3%	High School Graduate, GED	\$23,329.40
36-45	22%	4%	High School Graduate, GED	\$25,356.80
46-55	14%	2%	High School Graduate, GED	\$30,032.21
56-65	7%	0%	12th Grade, no Diploma	\$24,709.39
66-75	2%	0%	11th Grade	\$20,250.61
76+	0%	NA	NA	NA



Age	Race				
	White	Black	AEI	API	Other
16-25	85%	3%	3%	0%	9%
26-35	91%	3%	2%	0%	4%
36-45	90%	2%	2%	2%	4%
46-55	93%	2%	3%	0%	3%
56-65	95%	2%	3%	0%	0%
66-75	88%	0%	13%	0%	0%
76+	0%	0%	0%	0%	0%



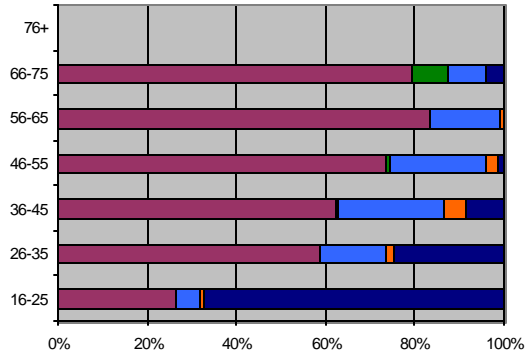
Age	16-25	26-35	36-45	46-55	56-65	66-75	76+
Hispanic Origin	21.2%	12.3%	7.5%	7.8%	8.3%	4.2%	NA

Family Information

Marital Status

Age	Married	Widowed	Divorced	Separated	Never Married
16-25	27%	0%	5%	1%	67%
26-35	59%	0%	15%	2%	25%
36-45	62%	0%	24%	5%	8%
46-55	74%	1%	21%	3%	2%
56-65	83%	0%	16%	1%	0%
66-75	79%	8%	8%	0%	4%
76+	0%	0%	0%	0%	0%

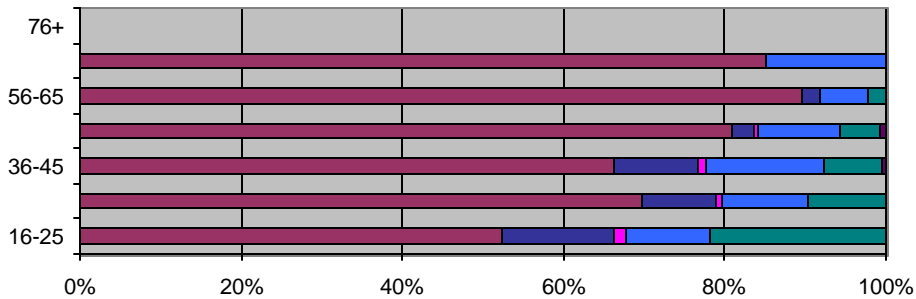
Marital Status



Family Type

Age	Married-Couple family household	Male householder (family)	Female Householder (Family)	Male Living Alone	Male Not Living Alone	Female Living Alone	Female Not Living Alone
16-25	52%	14%	2%	10%	22%	0%	0%
26-35	70%	9%	1%	11%	10%	0%	0%
36-45	66%	11%	1%	15%	7%	0%	0%
46-55	81%	3%	1%	10%	5%	0%	1%
56-65	90%	2%	0%	6%	2%	0%	0%
66-75	85%	0%	0%	15%	0%	0%	0%
76+	0%	0%	0%	0%	0%	0%	0%

Household Family Type

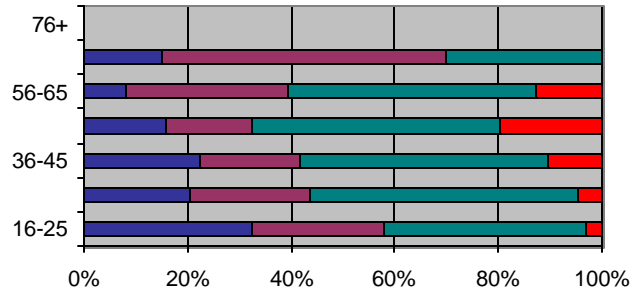


Age	16-25	26-35	36-45	46-55	56-65	66-75	76+
Average Number of Children Per Household	0.80	1.38	1.33	0.56	0.06	0.00	NA

Workers in the Family in 1989

Age	N/A	1 Worker	2 Workers	3+ Workers
16-25	32%	26%	39%	3%
26-35	20%	23%	52%	5%
36-45	22%	19%	48%	11%
46-55	16%	16%	48%	20%
56-65	8%	31%	48%	13%
66-75	15%	55%	30%	0%
76+	0%	0%	0%	0%

Workers in the Family

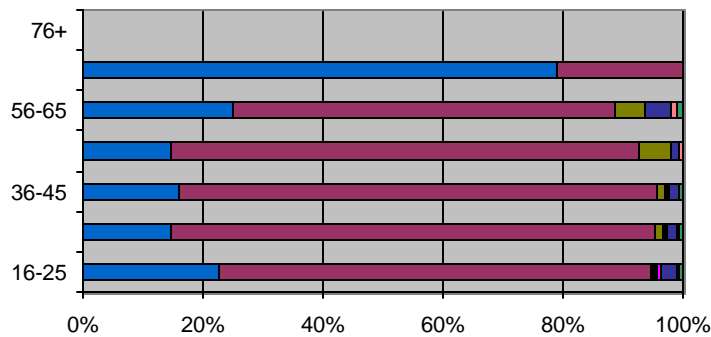


Transportation Information

Means of Transportation to Work

Age	N/A	Car, Truck, or Van	Bus or Trolley	Taxi	Motorcycle	Bicycle	Walked	Worked at Home	Other
16-25	23%	72%	0%	0%	0%	1%	3%	0%	1%
26-35	15%	81%	1%	0%	0%	0%	2%	0%	1%
36-45	16%	80%	1%	0%	0%	0%	2%	0%	1%
46-55	15%	78%	5%	0%	0%	0%	2%	1%	0%
56-65	25%	64%	5%	0%	0%	0%	4%	1%	1%
66-75	79%	21%	0%	0%	0%	0%	0%	0%	0%
76+	0%	0%	0%	0%	0%	0%	0%	0%	0%

Means of Transportation



Age	16-25	26-35	36-45	46-55	56-65	66-75	76+
Average Travel Time to Work (minutes)	23.28	28.90	32.40	39.15	30.29	18.75	NA

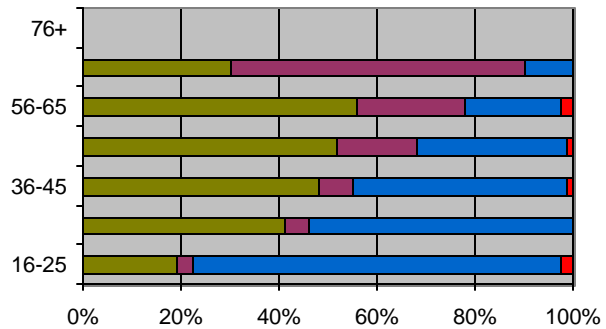
Household Information

Age	16-25	26-35	36-45	46-55	56-65	66-75	76+
Number of Householders	39.7%	67.6%	76.9%	81.9%	89.6%	83.3%	NA
Average Household Income	\$25,500.37	\$36,324.47	\$39,803.74	\$45,284.34	\$43,683.33	\$28,485.47	NA

Tenure

Age	Owned with mortgage or loan	Owned free and clear	Rented for cash rent	No cash rent
16-25	19%	3%	75%	2%
26-35	41%	5%	54%	0%
36-45	48%	7%	43%	1%
46-55	52%	16%	30%	1%
56-65	56%	22%	20%	2%
66-75	30%	60%	10%	0%
76+	0%	0%	0%	0%

Tenure

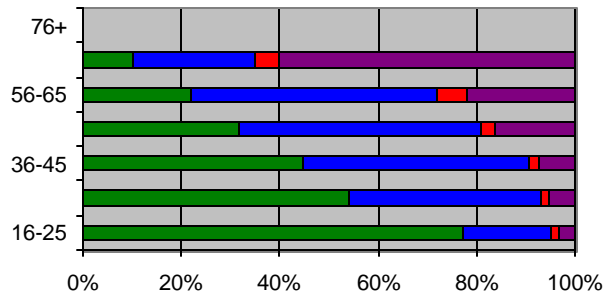


Age	16-25	26-35	36-45	46-55	56-65	66-75	76+
Average Monthly Rent	\$425-\$449	\$450-\$474	\$450-\$474	\$475-\$499	\$325-\$349	\$125-\$149	NA
Average Property Value	\$40,000-\$44,999	\$55,000-\$69,999	\$50,000-\$54,999	\$65,000-\$69,999	\$70,000-\$74,999	\$60,000-\$64,999	NA
Avg. Monthly Mortgage Payment	\$528.76	\$559.35	\$510.48	\$544.95	\$412.50	\$369.30	NA

Mortgage Status

Age	N/A	Mortgage deed of trust, or similar debt	Contract to purchase	None
16-25	77%	18%	2%	3%
26-35	54%	39%	2%	5%
36-45	45%	46%	2%	7%
46-55	32%	49%	3%	16%
56-65	22%	50%	6%	22%
66-75	10%	25%	5%	60%
76+	0%	0%	0%	0%

Mortgage Status



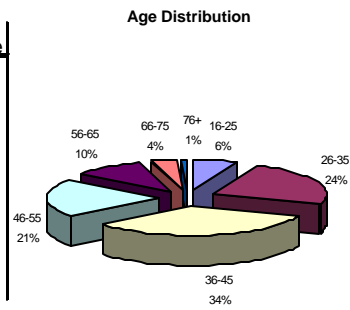


Managers and Administrators

4% of all employed people in Nevada are Managers and Administrators

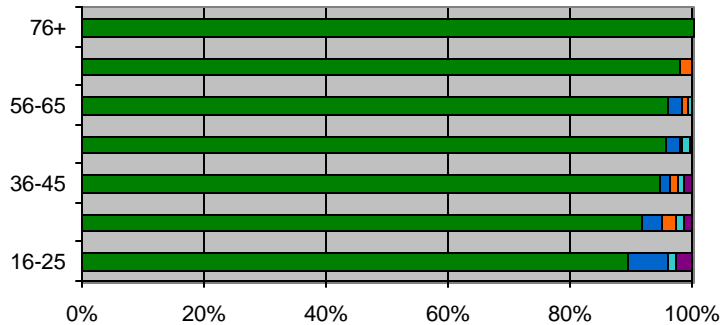
General Information

Age	Total	Females	Average Schooling	Average Income
16-25	6%	42%	Some College, no Degree	\$13,637.02
26-35	24%	39%	Associate Degree, Occupational Program	\$30,658.47
36-45	34%	39%	Associate Degree, Occupational Program	\$40,320.84
46-55	21%	26%	Some College, no Degree	\$46,549.80
56-65	10%	24%	Some College, no Degree	\$51,690.59
66-75	4%	43%	Some College, no Degree	\$23,570.34
76+	1%	22%	Associate Degree, Occupational Program	\$11,473.28



Race

Age	Race				
	White	Black	AEI	API	Other
16-25	90%	6%	0%	1%	3%
26-35	92%	3%	2%	1%	1%
36-45	95%	2%	1%	1%	1%
46-55	96%	2%	0%	1%	0%
56-65	96%	2%	1%	1%	0%
66-75	98%	0%	2%	0%	0%
76+	100%	0%	0%	0%	0%



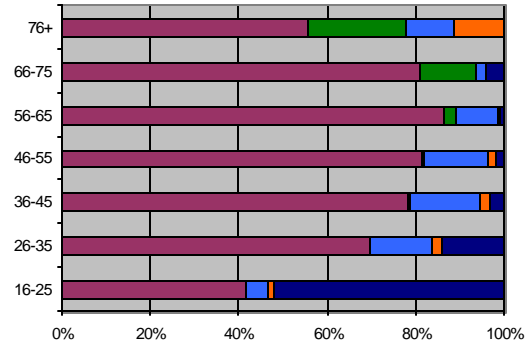
Age	16-25	26-35	36-45	46-55	56-65	66-75	76+
Hispanic Origin	5.2%	2.7%	4.8%	2.0%	0.8%	0.0%	0.0%

Family Information

Marital Status

Age	Married	Widowed	Divorced	Separated	Never Married
16-25	42%	0%	5%	1%	52%
26-35	70%	0%	14%	2%	14%
36-45	78%	0%	16%	2%	3%
46-55	82%	0%	14%	2%	2%
56-65	87%	2%	9%	1%	1%
66-75	81%	13%	2%	0%	4%
76+	56%	22%	11%	11%	0%

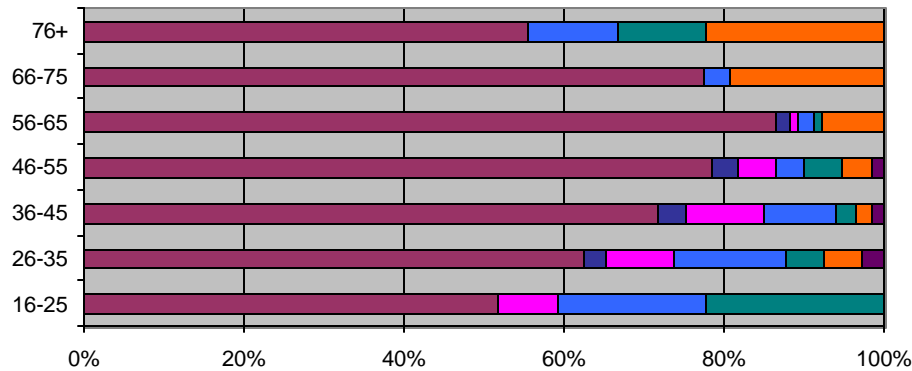
Marital Status



Family Type

Age	Married-Couple Family Household	Male Householder (Family)	Female Householder (Family)	Male Living Alone	Male Not Living Alone	Female Living Alone	Female Not Living Alone
16-25	52%	0%	7%	19%	22%	0%	0%
26-35	63%	3%	9%	14%	5%	5%	3%
36-45	72%	4%	10%	9%	3%	2%	1%
46-55	79%	3%	5%	4%	5%	4%	2%
56-65	86%	2%	1%	2%	1%	8%	0%
66-75	77%	0%	0%	3%	0%	19%	0%
76+	56%	0%	0%	11%	11%	22%	0%

Household Family Type

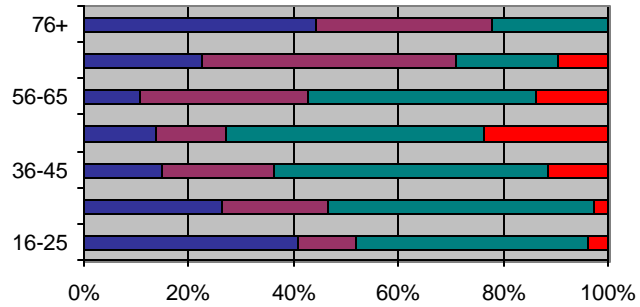


Age	16-25	26-35	36-45	46-55	56-65	66-75	76+
Average Number of Children Per Household	0.41	1.31	1.26	0.46	0.14	0.00	0.00

Workers in the Family

Workers in the Family in 1989

Age	N/A	1 Worker	2 Workers	3+ Workers
16-25	41%	11%	44%	4%
26-35	26%	20%	51%	3%
36-45	15%	21%	53%	11%
46-55	14%	14%	49%	24%
56-65	11%	32%	44%	14%
66-75	23%	48%	19%	10%
76+	44%	33%	22%	0%

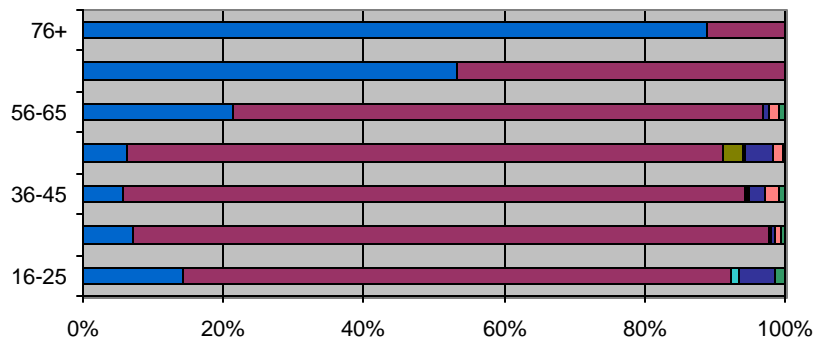


Transportation Information

Means of Transportation to Work

Age	N/A	Car, Truck, or Van	Bus or Trolley	Taxi	Motorcycle	Bicycle	Walked	Worked at Home	Other
16-25	14%	78%	0%	0%	1%	0%	5%	0%	1%
26-35	7%	90%	0%	0%	0%	0%	1%	1%	1%
36-45	6%	89%	0%	0%	0%	0%	2%	2%	1%
46-55	6%	84%	3%	0%	0%	0%	4%	1%	0%
56-65	21%	76%	0%	0%	0%	0%	1%	2%	1%
66-75	53%	47%	0%	0%	0%	0%	0%	0%	0%
76+	89%	11%	0%	0%	0%	0%	0%	0%	0%

Means of Transportation



Age	16-25	26-35	36-45	46-55	56-65	66-75	76+
Average Travel Time to Work (minutes)	22.58	27.34	23.21	31.49	18.32	16.68	20.00

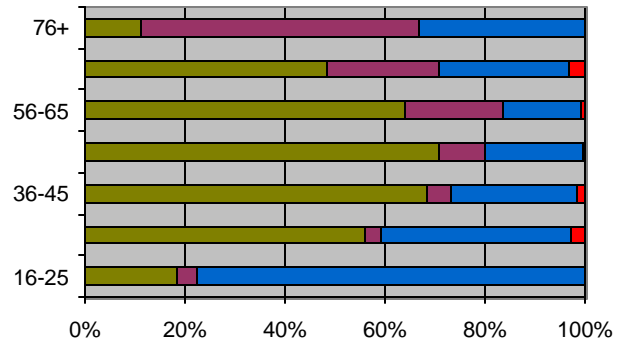
Household Information

Age	16-25	26-35	36-45	46-55	56-65	66-75	76+
Number of Householders	35.1%	64.0%	67.5%	76.1%	81.1%	66.0%	100.0%
Average Household Income	\$25,933.79	\$48,023.34	\$65,118.93	\$75,384.40	\$83,792.75	\$73,916.93	\$29,003.36

Tenure

Age	Owned with mortgage or loan	Owned free and clear	Rented for cash rent	No cash rent
16-25	19%	4%	78%	0%
26-35	56%	3%	38%	3%
36-45	69%	5%	25%	1%
46-55	71%	9%	19%	1%
56-65	64%	19%	16%	1%
66-75	48%	23%	26%	3%
76+	11%	56%	33%	0%

Tenure

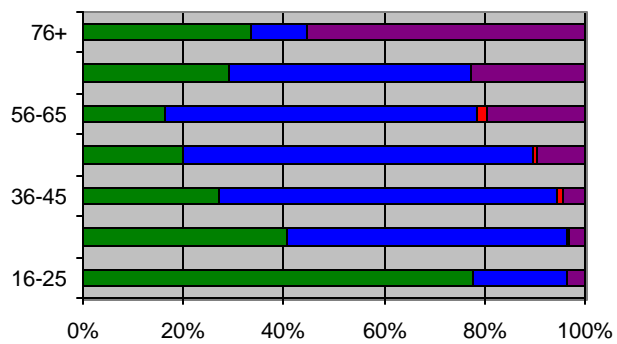


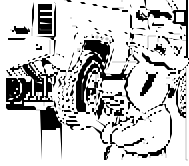
Age	16-25	26-35	36-45	46-55	56-65	66-75	76+
Average Monthly Rent	\$350-\$374	\$475-\$499	\$525-\$549	\$525-\$549	\$550-\$599	\$475-\$499	\$450-\$474
Average Property Value	\$60,000-\$64,999	\$80,000-\$89,999	\$100,000-\$124,999	\$90,000-\$99,999	\$100,000-\$124,999	\$150,000-\$174,999	\$90,000-\$99,999
Avg. Monthly Mortgage Payment	\$854.88	\$788.44	\$858.62	\$818.09	\$833.61	\$851.38	\$845.00

Mortgage Status

Age	N/A	Mortgage deed of trust, or similar debt	Contract to purchase	None
16-25	78%	19%	0%	4%
26-35	41%	56%	1%	3%
36-45	27%	67%	1%	4%
46-55	20%	70%	1%	9%
56-65	17%	62%	2%	19%
66-75	29%	48%	0%	23%
76+	33%	11%	0%	56%

Mortgage Status





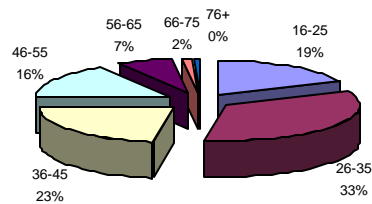
Mechanics and Repairers, Except Supervisors

4% of all people employed in Nevada are Mechanics and Repairers (not including supervisors)

General Information

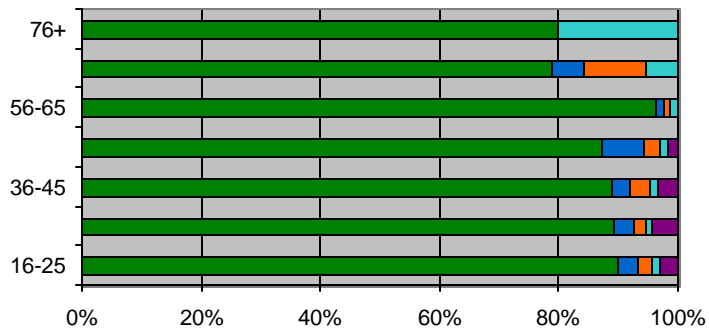
Age	Total	Females	Average Schooling	Average Income
16-25	19%	4%	High School Graduate, GED	\$12,723.60
26-35	34%	5%	High School Graduate, GED	\$23,907.80
36-45	23%	3%	High School Graduate, GED	\$30,514.27
46-55	16%	3%	High School Graduate, GED	\$28,644.55
56-65	7%	4%	High School Graduate, GED	\$24,407.49
66-75	2%	0%	12th Grade, no Diploma	\$14,077.87
76+	0%	0%	12th Grade, no Diploma	\$18,582.67

Age Distribution



Race

Age	Race				
	White	Black	AEI	API	Other
16-25	90%	3%	2%	1%	3%
26-35	89%	3%	2%	1%	4%
36-45	89%	3%	3%	1%	3%
46-55	87%	7%	3%	2%	2%
56-65	96%	1%	1%	1%	0%
66-75	79%	5%	11%	5%	0%
76+	80%	0%	0%	20%	0%



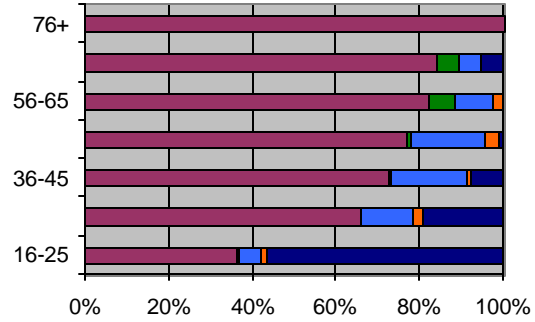
Age	16-25	26-35	36-45	46-55	56-65	66-75	76+
Hispanic Origin	7.2%	9.6%	5.5%	6.8%	0.0%	0.0%	20.0%

Family Information

Marital Status

Age	Married	Widowed	Divorced	Separated	Never Married
16-25	36%	0%	5%	1%	57%
26-35	66%	0%	12%	3%	19%
36-45	73%	0%	18%	1%	8%
46-55	77%	1%	18%	3%	1%
56-65	83%	6%	9%	3%	0%
66-75	84%	5%	5%	0%	5%
76+	100%	0%	0%	0%	0%

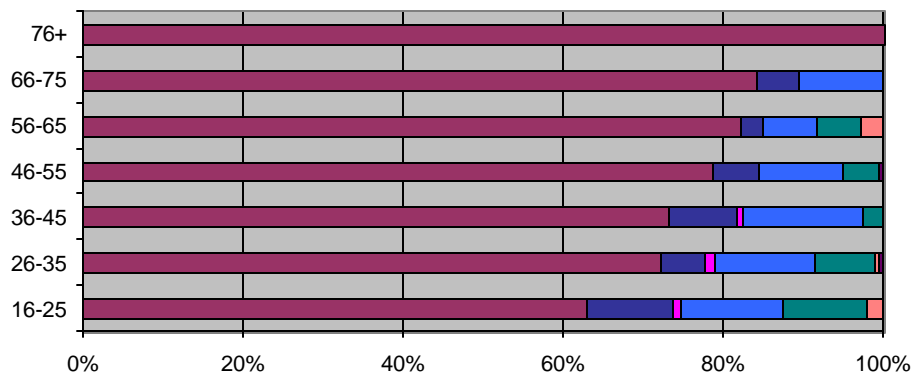
Marital Status



Family Type

Age	Married-Couple Family Household	Male Householder (Family)	Female Householder (Family)	Male Living Alone	Male Not Living Alone	Female Living Alone	Female Not Living Alone
16-25	63%	11%	1%	13%	11%	2%	0%
26-35	72%	6%	1%	13%	8%	0%	1%
36-45	73%	8%	1%	15%	3%	0%	0%
46-55	79%	6%	0%	11%	4%	0%	1%
56-65	82%	3%	0%	7%	5%	3%	0%
66-75	84%	5%	0%	11%	0%	0%	0%
76+	100%	0%	0%	0%	0%	0%	0%

Household Family Type



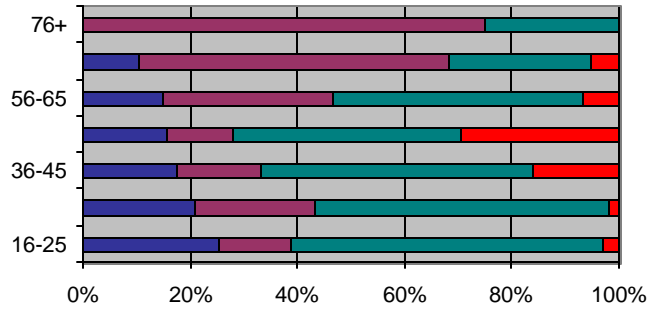
Age	16-25	26-35	36-45	46-55	56-65	66-75	76+
Average Number of Children Per Household	0.62	1.36	1.36	0.40	0.10	0.05	0.00

Mechanics and Repairers, Except Supervisors

Workers in the Family

Workers in the Family in 1989

Age	N/A	1 Worker	2 Workers	3+ Workers
16-25	25%	14%	58%	3%
26-35	21%	22%	55%	2%
36-45	17%	16%	51%	16%
46-55	16%	13%	43%	29%
56-65	15%	32%	47%	7%
66-75	11%	58%	26%	5%
76+	0%	75%	25%	0%

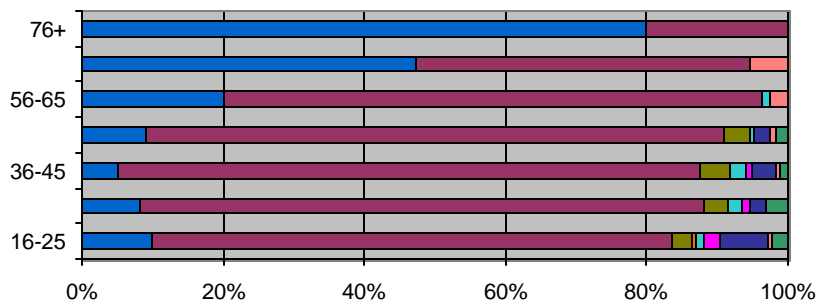


Transportation Information

Means of Transportation to Work

Age	N/A	Car, Truck, or Van	Bus or Trolley	Taxi	Motorcycle	Bicycle	Walked	Worked at Home	Other
16-25	10%	74%	3%	0%	1%	2%	7%	0%	2%
26-35	8%	80%	3%	0%	2%	1%	2%	0%	3%
36-45	5%	82%	4%	0%	2%	1%	3%	1%	1%
46-55	9%	82%	4%	0%	1%	0%	2%	1%	2%
56-65	20%	76%	0%	0%	1%	0%	0%	3%	0%
66-75	47%	47%	0%	0%	0%	0%	0%	5%	0%
76+	80%	20%	0%	0%	0%	0%	0%	0%	0%

Means of Transportation



Age	16-25	26-35	36-45	46-55	56-65	66-75	76+
Average Travel Time to Work (minutes)	18.10	30.98	29.64	26.97	22.95	36.88	10.00

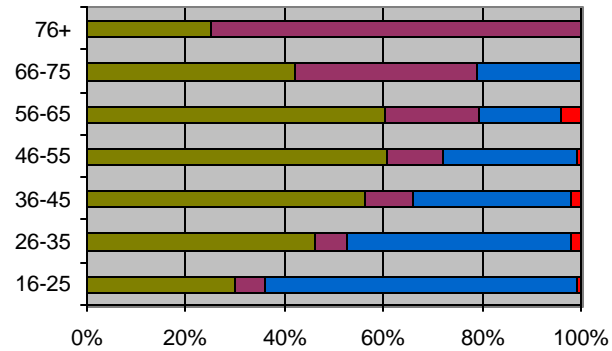
Household Information

Age	16-25	26-35	36-45	46-55	56-65	66-75	76+
Number of Householders	46.6%	78.8%	84.2%	84.2%	91.3%	100.0%	80.0%
Average Household Income	\$37,623.93	\$34,929.87	\$43,068.97	\$49,269.95	\$42,442.90	\$32,998.77	\$60,097.83

Tenure

Age	Owned with mortgage or loan	Owned free and clear	Rented for cash rent	No cash rent
16-25	30%	6%	63%	1%
26-35	46%	6%	46%	2%
36-45	56%	10%	32%	2%
46-55	61%	11%	28%	1%
56-65	60%	19%	16%	4%
66-75	42%	37%	21%	0%
76+	25%	75%	0%	0%

Tenure

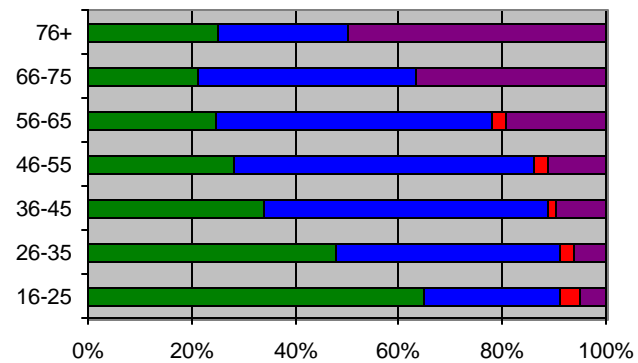


Age	16-25	26-35	36-45	46-55	56-65	66-75	76+
Average Monthly Rent	\$400-\$424	\$425-\$449	\$425-\$449	\$425-\$449	\$450-\$474	\$325-\$349	NA
Average Property Value	\$45,000-\$49,999	\$50,000-\$54,999	\$50,000-\$54,999	\$65,000-\$69,999	\$70,000-\$74,999	\$80,000-\$89,999	\$90,000-\$99,999
Avg. Monthly Mortgage Payment	\$523.81	\$486.13	\$517.39	\$473.82	\$341.31	\$460.87	\$1,059.00

Mortgage Status

Age	N/A	Mortgage deed of trust, or similar debt	Contract to purchase	None
16-25	65%	26%	4%	5%
26-35	48%	43%	3%	6%
36-45	34%	55%	2%	10%
46-55	28%	58%	3%	11%
56-65	25%	53%	3%	19%
66-75	21%	42%	0%	37%
76+	25%	25%	0%	50%

Mortgage Status





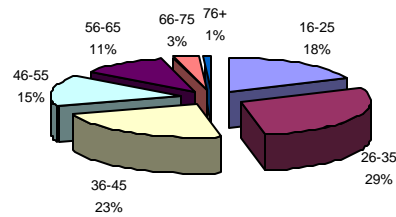
Motor Vehicle Operators

3% of all people employed in Nevada are Motor Vehicle Operators

General Information

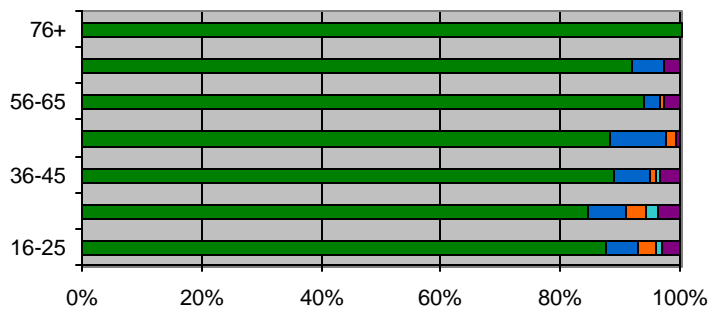
Age	Total	Females	Average Schooling	Average Income
16-25	18%	13%	12th Grade, no Diploma	\$10,633.84
26-35	29%	15%	High School Graduate, GED	\$21,214.23
36-45	23%	14%	High School Graduate, GED	\$22,986.98
46-55	15%	10%	High School Graduate, GED	\$25,224.63
56-65	11%	5%	12th Grade, no Diploma	\$23,146.57
66-75	3%	3%	High School Graduate, GED	\$12,766.91
76+	1%	0%	High School Graduate, GED	\$9,483.70

Age Distribution



Race

Age	Race				
	White	Black	AEI	API	Other
16-25	88%	5%	3%	1%	3%
26-35	85%	7%	3%	2%	4%
36-45	89%	6%	1%	0%	4%
46-55	88%	9%	2%	0%	1%
56-65	94%	3%	1%	0%	3%
66-75	92%	5%	0%	0%	3%
76+	100%	0%	0%	0%	0%



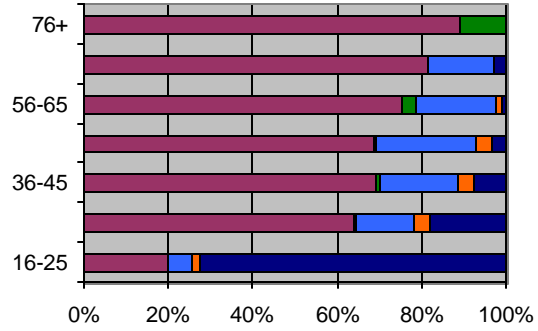
Age	16-25	26-35	36-45	46-55	56-65	66-75	76+
Hispanic Origin	7.4%	7.1%	6.6%	3.5%	5.9%	5.3%	0.0%

Family Information

Marital Status

Age	Married	Widowed	Divorced	Separated	Never Married
16-25	20%	0%	6%	2%	72%
26-35	64%	1%	14%	4%	18%
36-45	69%	1%	19%	4%	7%
46-55	69%	1%	24%	3%	3%
56-65	75%	3%	19%	2%	1%
66-75	82%	0%	16%	0%	3%
76+	89%	11%	0%	0%	0%

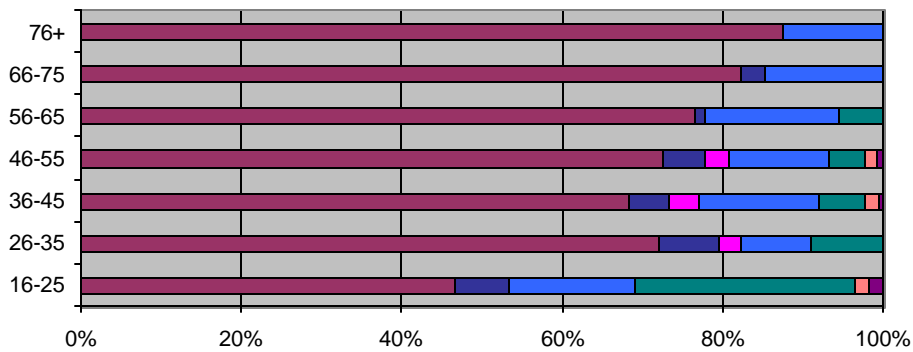
Marital Status



Family Type

Age	Married-Couple Family Household	Male Householder (Family)	Female Householder (Family)	Male Living Alone	Male Not Living Alone	Female Living Alone	Female Not Living Alone
16-25	47%	7%	0%	16%	28%	2%	2%
26-35	72%	7%	3%	9%	9%	0%	0%
36-45	68%	5%	4%	15%	6%	2%	1%
46-55	73%	5%	3%	13%	4%	1%	1%
56-65	77%	1%	0%	17%	6%	0%	0%
66-75	82%	3%	0%	15%	0%	0%	0%
76+	88%	0%	0%	13%	0%	0%	0%

Household Family Type

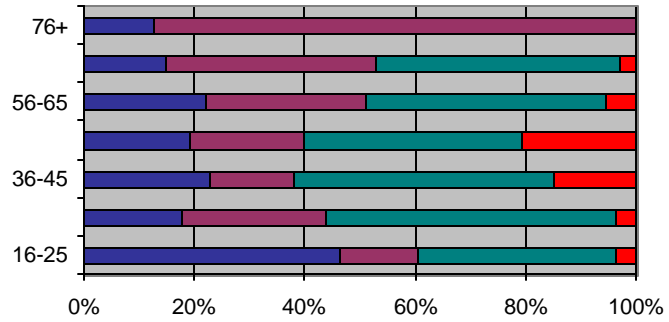


Age	16-25	26-35	36-45	46-55	56-65	66-75	76+
Average Number of Children Per Household	0.57	1.54	1.20	0.33	0.06	0.09	0.00

Workers in the Family

Workers in the Family in 1989

Age	N/A	1 Worker	2 Workers	3+ Workers
16-25	47%	14%	36%	3%
26-35	18%	26%	52%	4%
36-45	23%	15%	47%	15%
46-55	19%	21%	39%	21%
56-65	22%	29%	43%	6%
66-75	15%	38%	44%	3%
76+	13%	88%	0%	0%

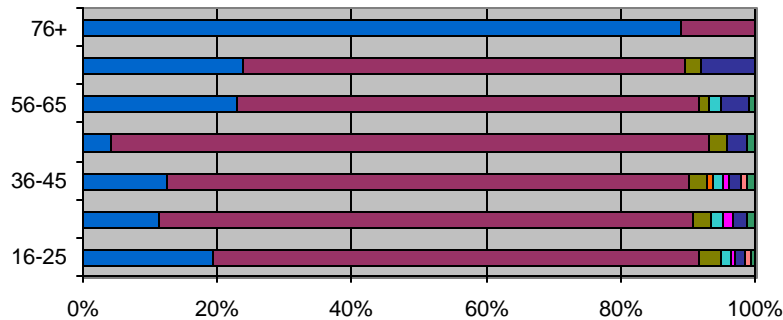


Transportation Information

Means of Transportation to Work

Age	N/A	Car, Truck, or Van	Bus or Trolley	Taxi	Motorcycle	Bicycle	Walked	Worked at Home	Other
16-25	19%	72%	3%	0%	1%	0%	1%	1%	0%
26-35	11%	79%	3%	0%	2%	1%	2%	0%	1%
36-45	12%	78%	3%	1%	2%	1%	2%	1%	1%
46-55	4%	89%	3%	0%	0%	0%	3%	0%	1%
56-65	23%	69%	2%	0%	2%	0%	4%	0%	1%
66-75	24%	66%	3%	0%	0%	0%	8%	0%	0%
76+	89%	11%	0%	0%	0%	0%	0%	0%	0%

Means of Transportation



Age	16-25	26-35	36-45	46-55	56-65	66-75	76+
Average Travel Time to Work (minutes)	24.02	23.95	29.35	26.36	23.94	17.49	5.00

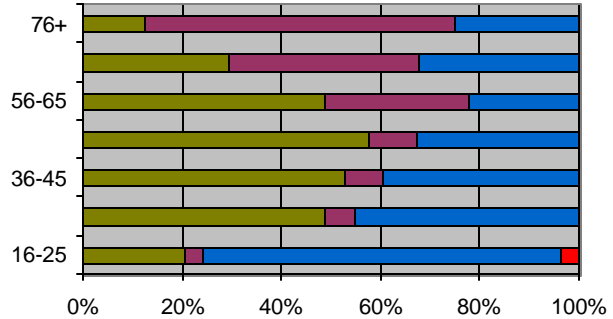
Household Information

Age	16-25	26-35	36-45	46-55	56-65	66-75	76+
Number of Householders	28.6%	66.3%	72.8%	78.0%	76.3%	89.5%	88.9%
Average Household Income	\$28,497.12	\$34,932.85	\$38,006.27	\$44,801.84	\$38,070.02	\$34,836.72	\$20,052.56

Tenure

Age	Owned with mortgage or loan	Owned free and clear	Rented for cash rent	No cash rent
16-25	21%	3%	72%	3%
26-35	49%	6%	45%	0%
36-45	53%	7%	40%	0%
46-55	58%	10%	33%	0%
56-65	49%	29%	22%	0%
66-75	29%	38%	32%	0%
76+	13%	63%	25%	0%

Tenure

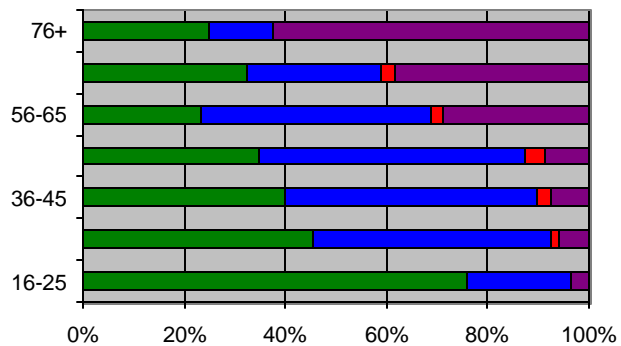


Age	16-25	26-35	36-45	46-55	56-65	66-75	76+
Average Monthly Rent	\$450-\$474	\$425-\$449	\$450-\$474	\$450-\$474	\$325-\$349	\$350-\$374	\$400-\$424
Average Property Value	\$50,000-\$54,999	\$50,000-\$54,999	\$55,000-\$59,999	\$55,000-\$59,999	\$55,000-\$59,999	\$65,000-\$69,999	\$75,000-\$79,999
Avg. Monthly Mortgage Paym	\$491.05	\$528.82	\$499.30	\$462.28	\$419.66	\$475.64	\$398.00

Mortgage Status

Age	N/A	Mortgage deed of trust, or similar debt	Contract to purchase	None
16-25	76%	21%	0%	3%
26-35	45%	47%	1%	6%
36-45	40%	50%	3%	7%
46-55	35%	53%	4%	9%
56-65	23%	46%	2%	29%
66-75	32%	26%	3%	38%
76+	25%	13%	0%	63%

Mortgage Status





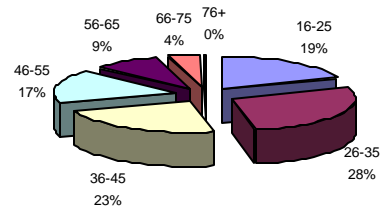
Secretaries, Stenographers, and Typists

3% of all people employed in Nevada are Secretaries, Stenographers, and Typists

General Information

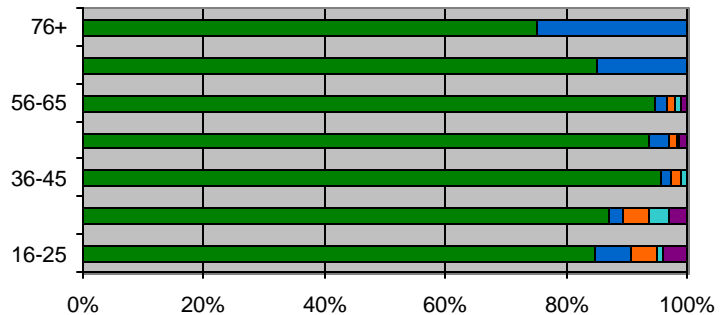
Age	Total	Females	Average Schooling	Average Income
16-25	19%	98%	High School Graduate, GED	\$9,004.13
26-35	28%	98%	Some College, but no degree	\$14,085.39
36-45	23%	98%	Some College, but no degree	\$17,024.26
46-55	17%	99%	High School Graduate, GED	\$18,294.09
56-65	9%	99%	Some College, but no degree	\$16,135.72
66-75	4%	95%	Some College, but no degree	\$16,365.65
76+	0%	100%	High School Graduate, GED	\$11,746.00

Age Distribution



Age	Race				
	White	Black	AEI	API	Other
16-25	85%	6%	4%	1%	4%
26-35	87%	2%	4%	4%	3%
36-45	96%	2%	2%	1%	0%
46-55	94%	4%	1%	1%	1%
56-65	95%	2%	1%	1%	1%
66-75	85%	15%	0%	0%	0%
76+	75%	25%	0%	0%	0%

Race



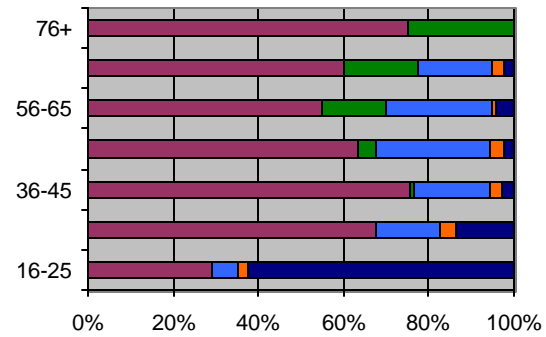
Age	16-25	26-35	36-45	46-55	56-65	66-75	76+
Hispanic Origin	9.7%	8.5%	4.3%	5.3%	5.4%	7.5%	0.0%

Family Information

Marital Status

Age	Married	Widowed	Divorced	Separated	Never Married
16-25	29%	0%	6%	3%	62%
26-35	68%	0%	15%	4%	14%
36-45	76%	1%	18%	3%	3%
46-55	63%	5%	26%	4%	2%
56-65	55%	15%	25%	1%	4%
66-75	60%	18%	18%	3%	3%
76+	75%	25%	0%	0%	0%

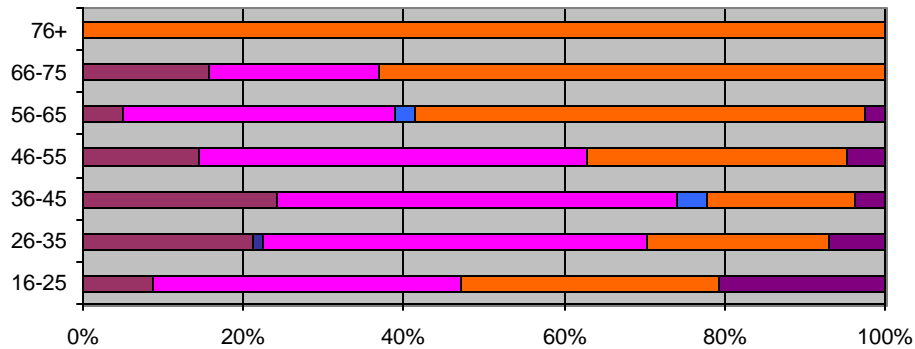
Marital Status



Family Type

Age	Married-Couple Family Household	Male Householder (Family)	Female Householder (Family)	Male Living Alone	Male Not Living Alone	Female Living Alone	Female Not Living Alone
16-25	9%	0%	38%	0%	0%	32%	21%
26-35	21%	1%	48%	0%	0%	23%	7%
36-45	24%	0%	50%	4%	0%	19%	4%
46-55	15%	0%	48%	0%	0%	32%	5%
56-65	5%	0%	34%	2%	0%	56%	2%
66-75	16%	0%	21%	0%	0%	63%	0%
76+	0%	0%	0%	0%	0%	100%	0%

Household Family Type

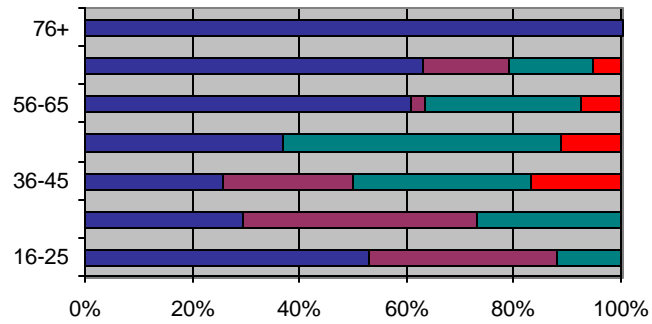


Age	16-25	26-35	36-45	46-55	56-65	66-75	76+
Average Number of Children Per Household	0.59	1.08	0.69	0.03	0.02	0.00	0.00

Workers in the Family

Workers in the Family in 1989

Age	N/A	1 Worker	2 Workers	3+ Workers
16-25	53%	35%	12%	0%
26-35	30%	44%	27%	0%
36-45	26%	24%	33%	17%
46-55	37%	0%	52%	11%
56-65	61%	2%	29%	7%
66-75	63%	16%	16%	5%
76+	100%	0%	0%	0%

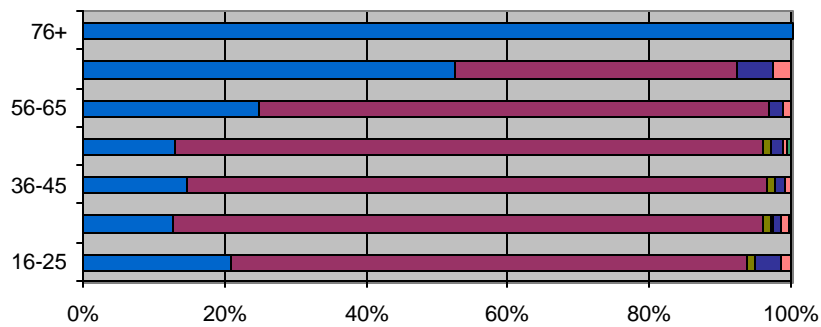


Transportation Information

Means of Transportation to Work

Age	N/A	Car, Truck, or Van	Bus or Trolley	Taxi	Motorcycle	Bicycle	Walked	Worked at Home	Other
16-25	21%	73%	1%	0%	0%	0%	4%	2%	0%
26-35	13%	83%	1%	0%	0%	0%	1%	1%	0%
36-45	15%	82%	1%	0%	0%	0%	1%	1%	0%
46-55	13%	83%	1%	0%	0%	0%	2%	1%	1%
56-65	25%	72%	0%	0%	0%	0%	2%	1%	0%
66-75	53%	40%	0%	0%	0%	0%	5%	3%	0%
76+	100%	0%	0%	0%	0%	0%	0%	0%	0%

Means of Transportation



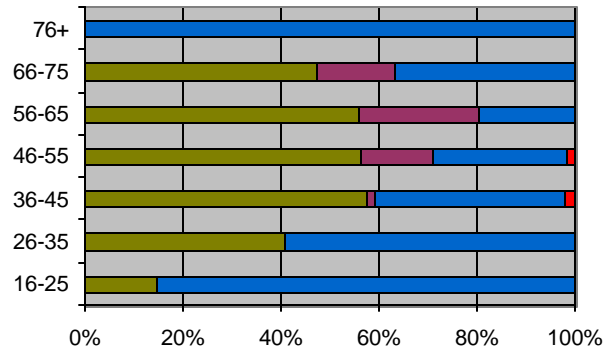
Age	16-25	26-35	36-45	46-55	56-65	66-75	76+
Average Travel Time to Work (minutes)	16.81	26.34	25.68	22.69	15.06	14.92	NA

Household Information

Age	16-25	26-35	36-45	46-55	56-65	66-75	76+
Number of Householders	17.3%	25.0%	23.2%	36.3%	44.1%	47.5%	25.0%
Average Household Income	\$21,352.56	\$26,451.69	\$34,120.94	\$34,463.41	\$28,952.21	\$34,417.60	\$22,508.00

Tenure

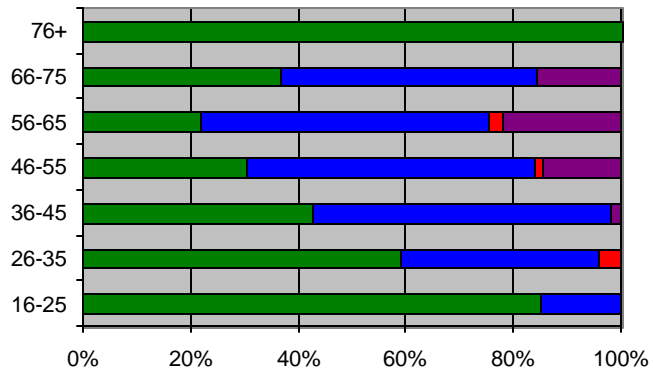
Age	Owned with mortgage or loan	Owned free and clear	Rented for cash rent	No cash rent
16-25	15%	0%	85%	0%
26-35	41%	0%	59%	0%
36-45	57%	2%	39%	2%
46-55	56%	15%	27%	2%
56-65	56%	24%	20%	0%
66-75	47%	16%	37%	0%
76+	0%	0%	100%	0%



Age	16-25	26-35	36-45	46-55	56-65	66-75	76+
Average Monthly Rent	\$375-\$399	\$425-\$449	\$475-\$499	\$450-\$474	\$450-\$474	\$375-\$399	\$650-\$699
Average Property Value	\$65,000-\$69,999	\$70,000-\$74,999	\$75,000-\$79,999	\$70,000-\$74,999	\$65,000-\$69,999	\$65,000-\$69,999	NA
Avg. Monthly Mortgage Paym	\$438.00	\$466.27	\$468.91	\$457.57	\$395.05	\$555.60	NA

Mortgage Status

Age	N/A	Mortgage deed of trust, or similar debt	Contract to purchase	None
16-25	85%	15%	0%	0%
26-35	59%	37%	4%	0%
36-45	43%	56%	0%	2%
46-55	31%	53%	2%	15%
56-65	22%	54%	2%	22%
66-75	37%	47%	0%	16%
76+	100%	0%	0%	0%





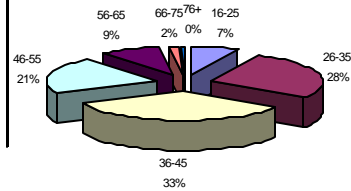
Teachers, Except Postsecondary

3% of all people employed in Nevada are Teachers (not including Postsecondary)

General Information

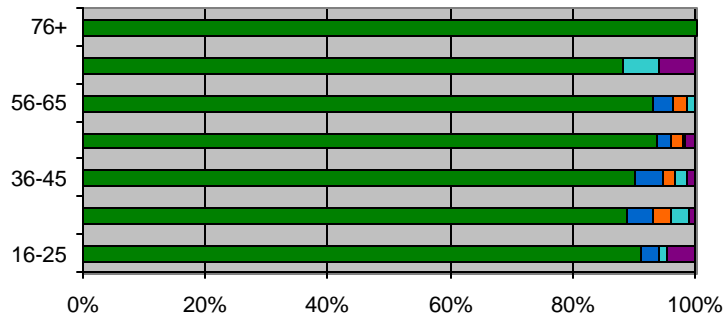
Age	Total	Females	Average Schooling	Average Income
16-25	7%	78%	Some College, but no degree	\$7,436.97
26-35	28%	70%	Associate Degree, Academic Program	\$17,640.64
36-45	34%	77%	Bachelor's Degree	\$23,613.93
46-55	21%	68%	Bachelor's Degree	\$27,803.88
56-65	9%	64%	Bachelor's Degree	\$22,293.36
66-75	2%	65%	Bachelor's Degree	\$8,593.90
76+	0%	75%	Bachelor's Degree	\$3,771.75

Age Distribution



Race

Age	Race				
	White	Black	AEI	API	Other
16-25	91%	3%	0%	1%	4%
26-35	89%	4%	3%	3%	1%
36-45	90%	4%	2%	2%	1%
46-55	94%	2%	2%	1%	2%
56-65	93%	3%	2%	1%	0%
66-75	88%	0%	0%	6%	6%
76+	100%	0%	0%	0%	0%



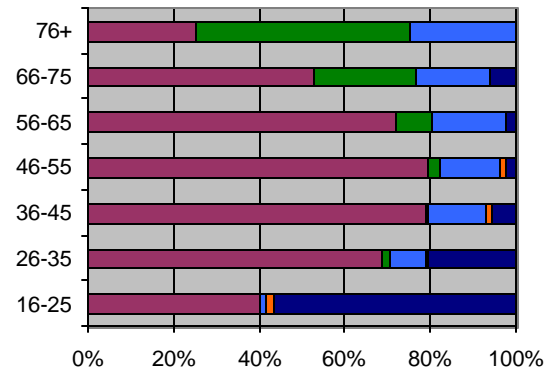
Age	16-25	26-35	36-45	46-55	56-65	66-75	76+
Hispanic Origin	6.0%	3.8%	3.4%	3.5%	1.2%	5.9%	25.0%

Family Information

Marital Status

Age	Married	Widowed	Divorced	Separated	Never Married
16-25	40%	0%	1%	1%	57%
26-35	69%	2%	9%	0%	21%
36-45	79%	1%	14%	1%	6%
46-55	79%	3%	14%	1%	3%
56-65	72%	8%	17%	0%	2%
66-75	53%	24%	18%	0%	6%
76+	25%	50%	25%	0%	0%

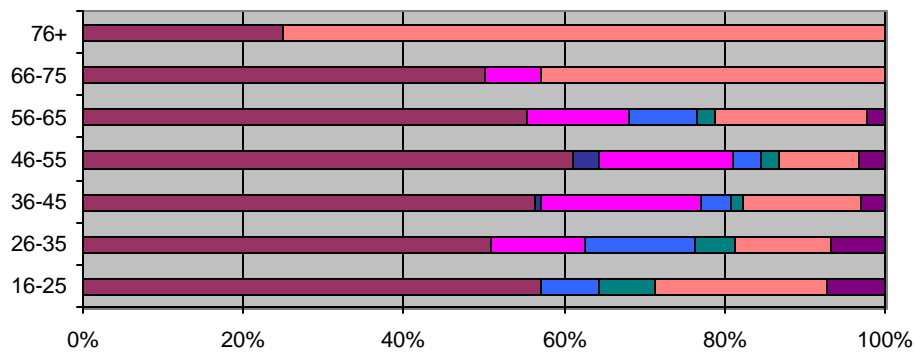
Marital Status



Family Type

Age	Married-Couple Family Household	Male Householder (Family)	Female Householder (Family)	Male Living Alone	Male Not Living Alone	Female Living Alone	Female Not Living Alone
16-25	57%	0%	0%	7%	7%	21%	7%
26-35	51%	0%	12%	14%	5%	12%	7%
36-45	56%	1%	20%	4%	1%	15%	3%
46-55	61%	3%	17%	3%	2%	10%	3%
56-65	55%	0%	13%	9%	2%	19%	2%
66-75	50%	0%	7%	0%	0%	43%	0%
76+	25%	0%	0%	0%	0%	75%	0%

Household Family Type

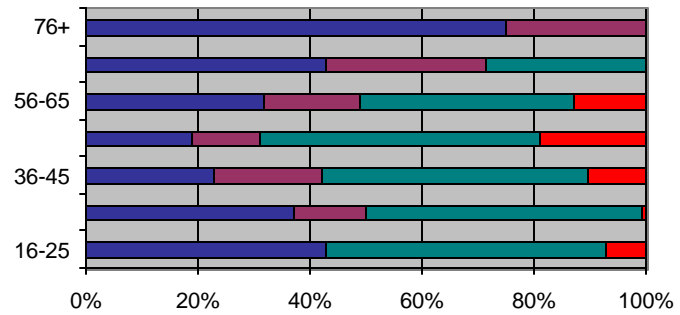


Age	16-25	26-35	36-45	46-55	56-65	66-75	76+
Average Number of Children Per Household	0.29	0.74	1.48	0.68	0.15	0.00	0.00

Workers in the Family

Workers in the Family in 1989

Age	N/A	1 Worker	2 Workers	3+ Workers
16-25	43%	0%	50%	7%
26-35	37%	13%	49%	1%
36-45	23%	19%	47%	10%
46-55	19%	12%	50%	19%
56-65	32%	17%	38%	13%
66-75	43%	29%	29%	0%
76+	75%	25%	0%	0%

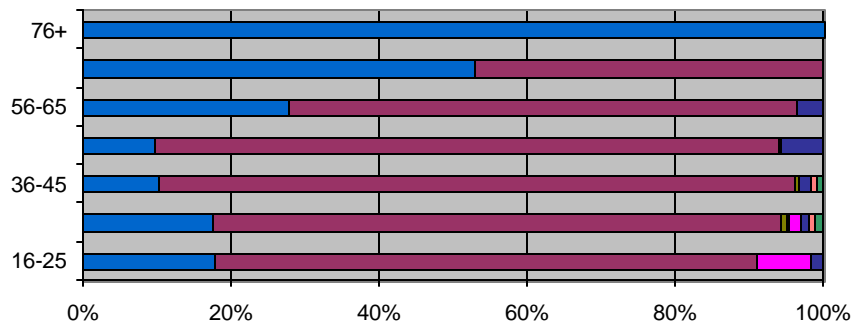


Transportation Information

Means of Transportation to Work

Age	N/A	Car, Truck, or Van	Bus or Trolley	Taxi	Motorcycle	Bicycle	Walked	Worked at Home	Other
16-25	18%	73%	0%	0%	0%	7%	1%	0%	0%
26-35	17%	77%	1%	0%	0%	2%	1%	1%	1%
36-45	10%	86%	1%	0%	0%	0%	2%	1%	1%
46-55	10%	84%	0%	0%	1%	0%	6%	0%	0%
56-65	28%	69%	0%	0%	0%	0%	3%	0%	0%
66-75	53%	47%	0%	0%	0%	0%	0%	0%	0%
76+	100%	0%	0%	0%	0%	0%	0%	0%	0%

Means of Transportation



Age	16-25	26-35	36-45	46-55	56-65	66-75	76+
Average Travel Time to Work (minutes)	15.20	22.25	15.56	17.46	14.99	20.67	NA

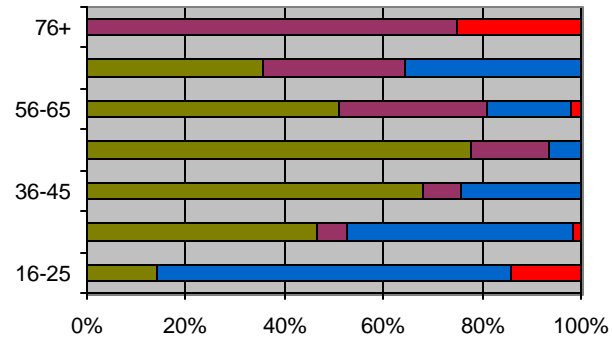
Household Information

Age	16-25	26-35	36-45	46-55	56-65	66-75	76+
Number of Householders	20.9%	44.9%	42.1%	45.5%	54.7%	82.4%	100.0%
Average Household Income	\$24,423.64	\$34,659.76	\$44,639.03	\$53,836.90	\$46,303.61	\$31,681.70	\$35,587.75

Tenure

Age	Owned with mortgage or loan	Owned free and clear	Rented for cash rent	No cash rent
16-25	14%	0%	71%	14%
26-35	47%	6%	46%	2%
36-45	68%	7%	24%	0%
46-55	78%	16%	7%	0%
56-65	51%	30%	17%	2%
66-75	36%	29%	36%	0%
76+	0%	75%	0%	25%

Tenure

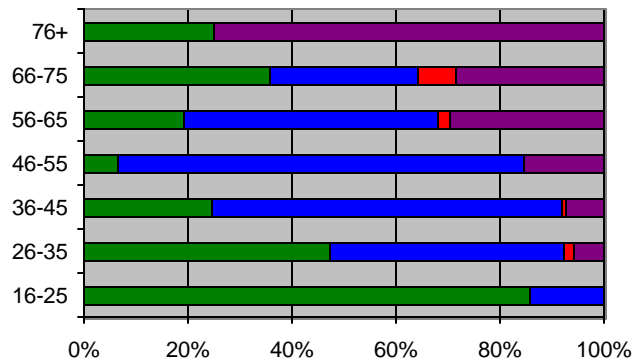


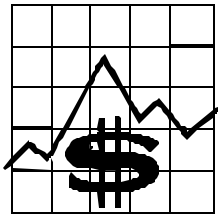
Age	16-25	26-35	36-45	46-55	56-65	66-75	76+
Average Monthly Rent	\$450-\$474	\$400-\$424	\$425-\$449	\$475-\$499	\$300-\$324	\$500-\$524	NA
Average Property Value	\$125,000-\$149,999	\$65,000-\$69,999	\$80,000-\$89,999	\$75,000-\$79,999	\$80,000-\$89,999	\$70,000-\$74,999	\$50,000-\$54,999
Avg. Monthly Mortgage Payment	\$815.00	\$608.62	\$665.04	\$596.57	\$620.06	\$311.80	NA

Mortgage Status

Mortgage Status

Age	N/A	Mortgage deed of trust, or similar debt	Contract to purchase	None
16-25	86%	14%	0%	0%
26-35	47%	45%	2%	6%
36-45	24%	67%	1%	7%
46-55	7%	78%	0%	16%
56-65	19%	49%	2%	30%
66-75	36%	29%	7%	29%
76+	25%	0%	0%	75%





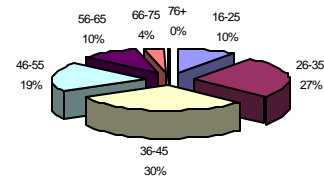
Management Related Occupations

3% of all people employed in Nevada are in Management Related Occupations

General Information

Age	Total	Females	Average Schooling	Average Income
16-25	10%	50%	Some College, but no degree	\$12,000.32
26-35	27%	61%	Associate Degree, Occupational Program	\$24,012.51
36-45	30%	55%	Associate Degree, Occupational Program	\$31,640.40
46-55	19%	47%	Associate Degree, Occupational Program	\$35,209.25
56-65	10%	43%	Some College, but no degree	\$28,476.89
66-75	4%	29%	Associate Degree, Occupational Program	\$20,805.01
76+	0%	0%	Associate Degree, Occupational Program	\$25,000.00

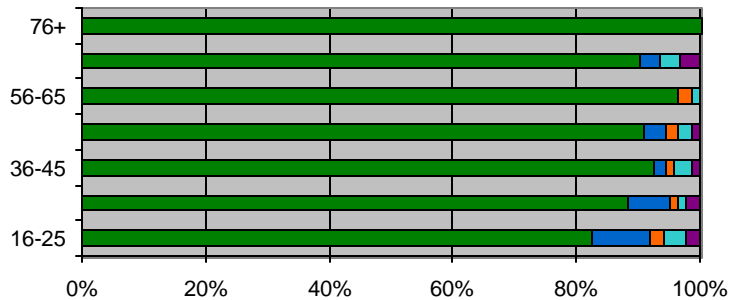
Age Distribution



Race

Age	White	Black	AEI	API	Other
16-25	83%	9%	2%	3%	2%
26-35	88%	7%	1%	1%	2%
36-45	93%	2%	1%	3%	1%
46-55	91%	4%	2%	2%	1%
56-65	97%	0%	2%	1%	0%
66-75	90%	3%	0%	3%	3%
76+	100%	0%	0%	0%	0%

Race



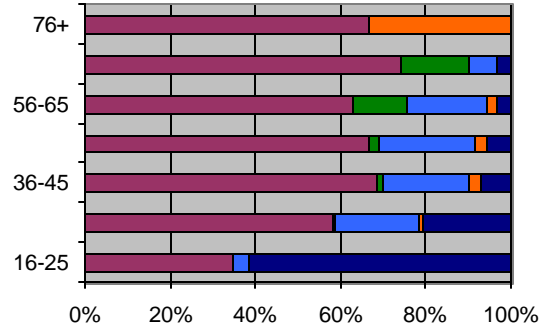
Age	16-25	26-35	36-45	46-55	56-65	66-75	76+
Hispanic Origin	3.5%	4.8%	3.9%	3.6%	3.5%	3.2%	0.0%

Family Information

Marital Status

Age	Married	Widowed	Divorced	Separated	Never Married
16-25	35%	0%	3%	0%	62%
26-35	58%	0%	20%	1%	21%
36-45	69%	1%	21%	3%	7%
46-55	67%	2%	22%	3%	5%
56-65	63%	13%	19%	2%	3%
66-75	74%	16%	6%	0%	3%
76+	67%	0%	0%	33%	0%

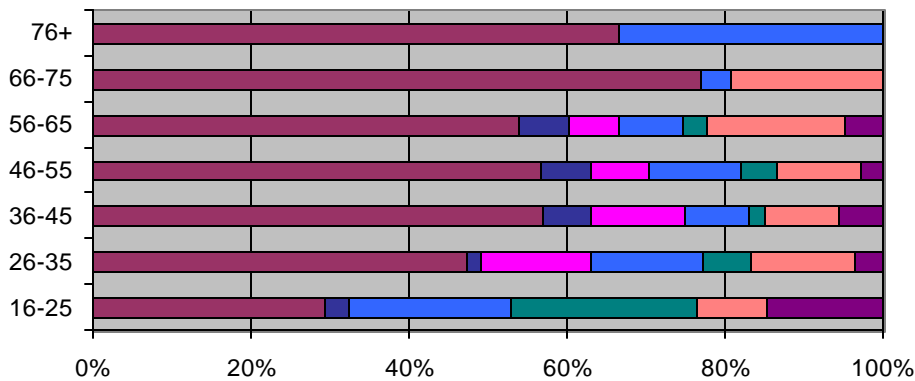
Marital Status



Family Type

Age	Married-Couple Family Household	Male Householder (Family)	Female Householder (Family)	Male Living Alone	Male Not Living Alone	Female Living Alone	Female Not Living Alone
16-25	29%	3%	0%	21%	24%	9%	15%
26-35	47%	2%	14%	14%	6%	13%	4%
36-45	57%	6%	12%	8%	2%	9%	6%
46-55	57%	6%	7%	12%	5%	11%	3%
56-65	54%	6%	6%	8%	3%	17%	5%
66-75	77%	0%	0%	4%	0%	19%	0%
76+	67%	0%	0%	33%	0%	0%	0%

Household Family Type



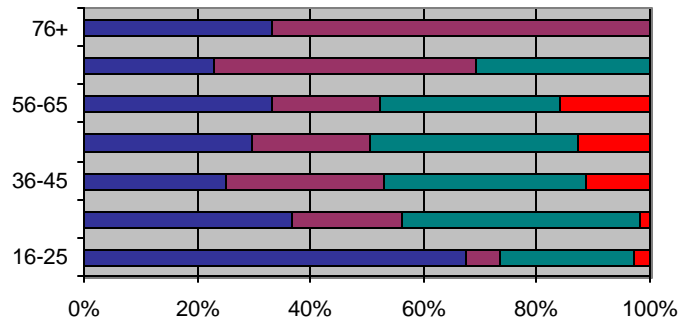
Age	16-25	26-35	36-45	46-55	56-65	66-75	76+
Average Number of Children Per Household	0.09	1.06	1.12	0.41	0.03	0.08	0.00

Management Related Occupations

Workers in the Family

Workers in the Family in 1989

Age	N/A	1 Worker	2 Workers	3+ Workers
16-25	68%	6%	24%	3%
26-35	37%	19%	42%	2%
36-45	25%	28%	36%	11%
46-55	30%	21%	37%	13%
56-65	33%	19%	32%	16%
66-75	23%	46%	31%	0%
76+	33%	67%	0%	0%

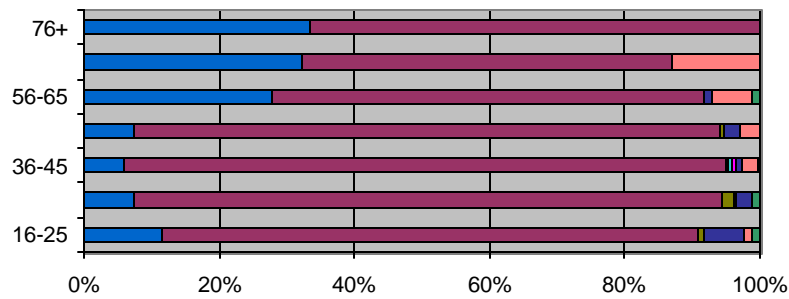


Transportation Information

Means of Transportation to Work

Age	N/A	Car, Truck, or Van	Bus or Trolley	Taxi	Motorcycle	Bicycle	Walked	Worked at Home	Other
16-25	12%	79%	1%	0%	0%	0%	6%	1%	1%
26-35	7%	87%	2%	0%	0%	0%	2%	0%	1%
36-45	6%	89%	0%	0%	0%	1%	1%	2%	0%
46-55	7%	87%	1%	0%	0%	0%	2%	3%	0%
56-65	28%	64%	0%	0%	0%	0%	1%	6%	1%
66-75	32%	55%	0%	0%	0%	0%	0%	13%	0%
76+	33%	67%	0%	0%	0%	0%	0%	0%	0%

Means of Transportation



Age	16-25	26-35	36-45	46-55	56-65	66-75	76+
Average Travel Time to Work (minutes)	17.64	33.99	25.07	20.73	14.53	28.33	12.50

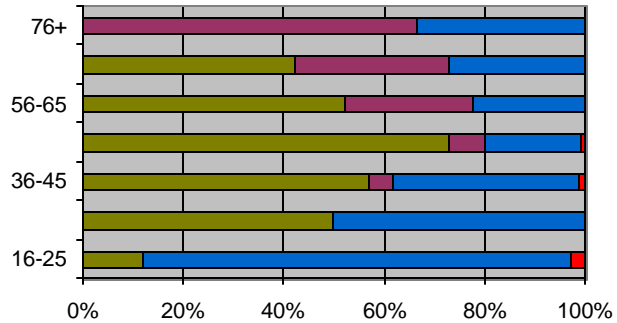
Household Information

Age	16-25	26-35	36-45	46-55	56-65	66-75	76+
Number of Householders	39.5%	49.6%	62.0%	67.3%	73.3%	83.9%	100.0%
Average Household Income	\$27,875.70	\$41,086.38	\$51,865.00	\$58,474.00	\$62,664.04	\$59,657.63	\$73,424.00

Tenure

Age	Owned with mortgage or loan	Owned free and clear	Rented for cash rent	No cash rent
16-25	12%	0%	85%	3%
26-35	50%	0%	50%	0%
36-45	57%	5%	37%	1%
46-55	73%	7%	19%	1%
56-65	52%	25%	22%	0%
66-75	42%	31%	27%	0%
76+	0%	67%	33%	0%

Tenure

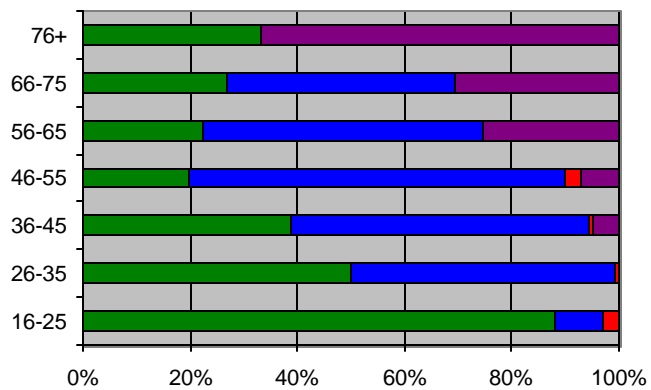


Age	16-25	26-35	36-45	46-55	56-65	66-75	76+
Average Monthly Rent	\$475-\$499	\$450-\$474	\$475-\$499	\$450-\$474	\$450-\$474	\$500-\$524	\$425-\$449
Average Property Value	\$80,000-\$89,999	\$80,000-\$89,999	\$70,000-\$74,999	\$90,000-\$99,999	\$90,000-\$99,999	\$90,000-\$99,999	\$70,000-\$74,999
Avg. Monthly Mortgage Payment	\$811.75	\$717.19	\$710.09	\$668.33	\$577.43	\$898.07	NA

Mortgage Status

Age	N/A	Mortgage deed of trust, or similar debt	Contract to purchase	None
16-25	88%	9%	3%	0%
26-35	50%	49%	1%	0%
36-45	39%	56%	1%	5%
46-55	20%	70%	3%	7%
56-65	22%	52%	0%	25%
66-75	27%	42%	0%	31%
76+	33%	0%	0%	67%

Mortgage Status



Nevada Occupational Employment & Projections 1998-2008
 Nevada-Statewide / All Industries
 Largest Occupations / Ranked By Base Year 1998 Employment

Occupation	Year 1998 Employment Estimate	Year 2000 Employment Estimate	Projected Year 2008 Employment Estimate
Total, All Occupations	993,110	1,093,278	1,493,950
Retail Salespersons	29,470	33,133	47,780
Cashiers	28,990	32,618	47,130
Waiters and Waitresses	25,430	28,073	38,650
Janitors	22,820	25,259	35,010
General Office Clerks	21,810	23,713	31,330
Maids & Room Cleaners	18,940	21,388	31,180
General Managers & Top Executives	18,450	20,230	27,360
Carpenters	16,780	18,214	23,950
Blackjack Dealers	16,250	18,380	26,890
Security Guards	16,130	18,370	27,330
Supervisors-Sales	16,070	17,834	24,890
Bookkeeping & Accounting Clerks	14,450	15,173	18,070

Source: Nevada Department of Employment, Training and Rehabilitation – Research and Analysis Bureau / 1998 Nevada OES Wage Survey

For the complete list of employment see http://www.state.nv.us/detr/lmi/data/nv_baseyr.pdf

APPENDIX 1
List Of All Occupations

000-202 MANAGERIAL AND PROFESSIONAL SPECIALTY OCCUPATIONS

000-042 Executive, Administrative, and Managerial Occupations

000-003 Legislators

004 Chief executives and general administrators, public administration

005 Administrators and officials, public administration

006 Administrators, protective services

007 Financial managers

008 Personnel and labor relations managers

009-012 Purchasing managers

013 Managers, marketing, advertising, and public relations

014 Administrators, education and related fields

015 Managers, medicine and health

016 Postmasters and mail superintendents

017 Managers, food serving and lodging establishments

018 Managers, properties and real estate

019-020 Funeral directors

021 Managers, service organizations, n.e.c.

022 Managers and administrators, n.e.c.

023-042 Management Related Occupations

023 Accountants and auditors

024 Underwriters

025 Other financial officers

026 Management analysts

027 Personnel, training, and labor relations specialists

028 Purchasing agents and buyers, farm products

029-032 Buyers, wholesale and retail trade except farm products

033 Purchasing agents and buyers, n.e.c.

034 Business and promotion agents

035 Construction inspectors

036 Inspectors and compliance officers, except construction

037-042 Management related occupations, n.e.c.

043-202 Professional Specialty Occupations

043-063 Engineers, Architects, and Surveyors

043 Architects

044-062 Engineers

044 Aerospace

045 Metallurgical and materials

046 Mining

047 Petroleum

048 Chemical

049-052 Nuclear

053 Civil

054 Agricultural

055 Electrical and electronic

056 Industrial

057 Mechanical

058 Marine and naval architects

059-062 Engineers, n.e.c.

063 Surveyors and mapping scientists

064-068 Mathematical and Computer Scientists

064 Computer systems analysts and scientists

065 Operations and systems researchers and analysts

066 Actuaries

067 Statisticians

068 Mathematical scientists, n.e.c.

069-083 Natural Scientists

069-072 Physicists and astronomers

073 Chemists, except biochemists

074 Atmospheric and space scientists

075 Geologists and geodesists

076 Physical scientists, n.e.c.

077 Agricultural and food scientists

078 Biological and life scientists

079-082 Forestry and conservation scientists

083 Medical scientists

084-094 Health Diagnosing Occupations

084 Physicians

085 Dentists

086 Veterinarians

087 Optometrists

088 Podiatrists

089-094 Health diagnosing practitioners, n.e.c.

095-112 Health Assessment and Treating Occupations

095 Registered nurses

096 Pharmacists

097 Dietitians

098-105 Therapists

098 Respiratory therapists

099-102 Occupational therapists

103 Physical therapists

104 Speech therapists

105 Therapists, n.e.c.

106-112 Physicians' assistants

113-154 Teachers, Postsecondary

113 Earth, environmental, and marine science teachers

114 Biological science teachers

115 Chemistry teachers

116 Physics teachers

117 Natural science teachers, n.e.c.

118 Psychology teachers

119-122 Economics teachers

123 History teachers

124 Political science teachers

125 Sociology teachers

126 Social science teachers, n.e.c.

127 Engineering teachers

128 Mathematical science teachers

129-132 Computer science teachers

133 Medical science teachers

134 Health specialties teachers

135 Business, commerce, and marketing teachers

136 Agriculture and forestry teachers

137 Art, drama, and music teachers

138 Physical education teachers

139-142 Education teachers

143 English teachers

144 Foreign language teachers

145 Law teachers

146 Social work teachers

147 Theology teachers

148 Trade and industrial teachers

149-152 Home economics teachers

153 Teachers, postsecondary, n.e.c.

154 Postsecondary teachers, subject not specified

155-162 Teachers, Except Postsecondary

155 Teachers, prekindergarten and kindergarten

156 Teachers, elementary school

157 Teachers, secondary school

158 Teachers, special education

159-162 Teachers, n.e.c.

163	Counselors, Educational and Vocational	227	Air traffic controllers
164-165	Librarians, Archivists, and Curators	228	Broadcast equipment operators
164	Librarians	229-232	Computer programmers
165	Archivists and curators	233	Tool programmers, numerical control
		234	Legal assistants
		235-242	Technicians, n.e.c.
166-173	Social Scientists and Urban Planners	243-302	Sales Occupations
166	Economists		
167	Psychologists	243-252	Supervisors and Proprietors, Sales Occupations
168	Sociologists	253-257	Sales Representatives, Finance and Business Services
169-172	Social scientists, n.e.c.	253	Insurance sales occupations
173	Urban planners	254	Real estate sales occupations
174-177	Social, Recreation, and Religious Workers	255	Securities and financial services sales occupations
174	Social workers	256	Advertising and related sales occupations
175	Recreation workers	257	Sales occupations, other business services
176	Clergy		
177	Religious workers, n.e.c.	258-262	Sales Representatives, Commodities, Except Retail
178-182	Lawyers and Judges	258	Sales engineers
178	Lawyers	259-262	Sales representatives, mining, manufacturing, and wholesale
179-182	Judges	263-282	Sales Workers, Retail and Personal Services
183-202	Writers, Artists, Entertainers, and Athletes	263	Sales workers, motor vehicles and boats
183	Authors	264	Sales workers, apparel
184	Technical writers	265	Sales workers, shoes
185	Designers	266	Sales workers, furniture and home furnishings
186	Musicians and composers	267	Sales workers, radio, TV, hi-fi, and appliances
187	Actors and directors	268	Sales workers, hardware and building supplies
188	Painters, sculptors, craft-artists, and artist printmakers	269-273	Sales workers, parts
189-192	Photographers	274	Sales workers, other commodities
193	Dancers	275	Sales counter clerks
194	Artists, performers, and related workers, n.e.c.	276	Cashiers
195-196	Editors and reporters	277	Street and door-to-door sales workers
197	Public relations specialists	278-282	News vendors
198	Announcers		
199-202	Athletes	283-302	Sales Related Occupations
		283	Demonstrators, promoters and models, sales
203-402	TECHNICAL, SALES, AND ADMINISTRATIVE SUPPORT OCCUPATIONS	284	Auctioneers
		285-302	Sales support occupations, n.e.c.
203-242	Technicians and Related Support Occupations	303-402	Administrative Support Occupations, Including Clerical
203-212	Health Technologists and Technicians		
203	Clinical laboratory technologists and technicians	303-307	Supervisors, Administrative Support Occupations
204	Dental hygienists	303	Supervisors, general office
205	Health record technologists and technicians	304	Supervisors, computer equipment operators
206	Radiologic technicians	305	Supervisors, financial records processing
207	Licensed practical nurses	306	Chief communications operators
208-212	Health technologists and technicians, n.e.c.	307	Supervisors, distribution, scheduling, and adjusting clerks
213-242	Technologists and Technicians, Except Health	308-312	Computer Equipment Operators
213-222	Engineering and Related Technologists and Technicians	308	Computer operators
213	Electrical and electronic technicians	309-312	Peripheral equipment operators
214	Industrial engineering technicians		
215	Mechanical engineering technicians	313-315	Secretaries, Stenographers, and Typists
216	Engineering technicians, n.e.c.	313	Secretaries
217	Drafting occupations	314	Stenographers
218-222	Surveying and mapping technicians	315	Typists
223-225	Science Technicians	316-324	Information Clerks
223	Biological technicians	316	Interviewers
224	Chemical technicians	317	Hotel clerks
225	Science technicians, n.e.c.	318	Transportation ticket and reservation agents
226-242	Technicians, Except Health, Engineering, and Science	319-322	Receptionists
226	Airplane pilots and navigators	323-324	Information clerks, n.e.c.
		325-336	Records Processing Occupations, Except Financial

325	Classified-ad clerks	413	Supervisors, firefighting and fire prevention occupations
326	Correspondence clerks	414	Supervisors, police and detectives
327	Order clerks	415	Supervisors, guards
328	Personnel clerks, except payroll and timekeeping	416-417	Firefighting and Fire Prevention Occupations
329-334	Library clerks	416	Fire inspection and fire prevention occupations
335	File clerks	417	Firefighting occupations
336	Records clerks	418-424	Police and Detectives
337-344	Financial Records Processing Occupations	418-422	Police and detectives, public service
337	Bookkeepers, accounting, and auditing clerks	423	Sheriffs, bailiffs, and other law enforcement officers
338	Payroll and timekeeping clerks	424	Correctional institution officers
339-342	Billing clerks	425-432	Guards
343	Cost and rate clerks	425	Crossing guards
344	Billing, posting, and calculating machine operators	426	Guards and police, except public service
345-347	Duplicating, Mail and Other Office Machine Operators	427-432	Protective service occupations, n.e.c.
345	Duplicating machine operators	433-472	Service Occupations, Except Protective and Household
346	Mail preparing and paper handling machine operators	433-444	Food Preparation and Service Occupations
347	Office machine operators, n.e.c.	433	Supervisors, food preparation and service occupations
348-353	Communications Equipment Operators	434	Bartenders
348-352	Telephone operators	435	Waiters and waitresses
353	Communications equipment operators, n.e.c.	436-437	Cooks
354-358	Mail and Message Distributing Occupations	438	Food counter, fountain and related occupations
354	Postal clerks, except mail carriers	439-442	Kitchen workers, food preparation
355	Mail carriers, postal service	443	Waiters/waitresses' assistants
356	Mail clerks, except postal service	444	Miscellaneous food preparation occupations
357-358	Messengers	445-447	Health Service Occupations
359-374	Material Recording, Scheduling, and Distributing Clerks	445	Dental assistants
359-362	Dispatchers	446	Health aides, except nursing
363	Production coordinators	447	Nursing aides, orderlies, and attendants
364	Traffic, shipping, and receiving clerks	448-455	Cleaning and Building Service Occupations, Except Household
365	Stock and inventory clerks	448	Supervisors, cleaning and building service workers
366	Meter readers	449-452	Maids and housemen
368-372	Weighers, measurers, checkers, and samplers	453	Janitors and cleaners
373	Expeditors	454	Elevator operators
374	Material recording, scheduling, and distributing clerks, n.e.c.	455	Pest control occupations
375-378	Adjusters and Investigators	456-472	Personal Service Occupations
375	Insurance adjusters, examiners, and investigators	456	Supervisors, personal service occupations
376	Investigators and adjusters, except insurance	457	Barbers
377	Eligibility clerks, social welfare	458	Hairdressers and cosmetologists
378	Bill and account collectors	459-460	Attendants, amusement and recreation facilities
379-402	Miscellaneous Administrative Support Occupations	461	Guides
379-382	General office clerks	462	Ushers
383	Bank tellers	463	Public transportation attendants
384	Proofreaders	464	Baggage porters and bellhops
385	Data-entry keyers	465	Welfare service aides
386	Statistical clerks	466	Family child care providers
387-388	Teachers' aides	467	Early childhood teacher's assistants
389-402	Administrative support occupations, n.e.c.	468	Child care workers, n.e.c.
403-472	SERVICE OCCUPATIONS	469-472	Personal service occupations, n.e.c.
403-412	Private Household Occupations	473-476	Farm Operators and Managers
403	Launderers and ironers	473	Farmers, except horticultural
404	Cooks, private household	474	Horticultural specialty farmers
405	Housekeepers and butlers	475	Managers, farms, except horticultural
406	Child care workers, private household	476	Managers, horticultural specialty farms
407-412	Private household cleaners and servants	477-493	Other Agricultural and Related Occupations
413-432	Protective Service Occupations	477-484	Farm Occupations, Except Managerial
413-415	Supervisors, Protective Service Occupations	477-478	Supervisors, farm workers
		479-482	Farm workers
		483	Marine life cultivation workers

484	Nursery workers	556	Supervisors, painters, paperhangers, and plasterers
485-493	Related Agricultural Occupations	557	Supervisors, plumbers, pipefitters, and steamfitters
485	Supervisors, related agricultural occupations	558-562	Supervisors, construction, n.e.c.
486	Groundskeepers and gardeners, except farm		
487	Animal caretakers, except farm	563-612	Construction Trades, Except Supervisors
488	Graders and sorters, agricultural products	563-564	Brickmasons and stonemasons
489-493	Inspectors, agricultural products	564	Brickmason and stonemason apprentices
		565	Tile setters, hard and soft
494-496	Forestry and Logging Occupations	566	Carpet installers
494	Supervisors, forestry and logging workers	567-572	Carpenters
495	Forestry workers, except logging	569-572	Carpenter apprentices
496	Timber cutting and logging occupations	573-574	Drywall installers
497-502	Fishers, Hunters, and Trappers	575-576	Electricians
497	Captains and other officers, fishing vessels	576	Electrician apprentices
498	Fishers	577-578	Electrical power installers and repairers
499-502	Hunters and trappers	579-582	Painters, construction and maintenance
		583	Paperhangers
503-702	PRECISION PRODUCTION, CRAFT, AND REPAIR OCCUPATIONS	584	Plasterers
		585-587	Plumbers, pipefitters, and steamfitters
503-552	Mechanics and Repairers	587	Plumber, pipefitter, and steamfitter apprentices
		588	Concrete and terrazzo finishers
503-504	Supervisors, mechanics and repairers	589-592	Glaziers
505-552	Mechanics and Repairers, Except Supervisors	593	Insulation workers
505-517	Vehicle and Mobile Equipment Mechanics and Repairers	594	Paving, surfacing, and tamping equipment operators
505-506	Automobile mechanics	595	Roofers
506	Automobile mechanic apprentices	596	Sheetmetal duct installers
507	Bus, truck, and stationary engine mechanics	597	Structural metal workers
508	Aircraft engine mechanics	598	Drillers, earth
509-513	Small engine repairers	599-612	Construction trades, n.e.c.
514	Automobile body and related repairers		
515	Aircraft mechanics, except engine	613-627	Extractive Occupations
516	Heavy equipment mechanics	613	Supervisors, extractive occupations
517	Farm equipment mechanics	614	Drillers, oil well
518	Industrial machinery repairers	615	Explosives workers
519-522	Machinery maintenance occupations	616	Mining machine operators
		617-627	Mining occupations, n.e.c.
523-533	Electrical and Electronic Equipment Repairers	628-702	Precision Production Occupations
523-524	Electronic repairers, communications and industrial equipment	628-633	Supervisors, production occupations
525	Data processing equipment repairers	634-655	Precision Metal Working Occupations
526	Household appliance and power tool repairers	634-635	Tool and die makers
527-528	Telephone line installers and repairers	635	Tool and die maker apprentices
529-532	Telephone installers and repairers	636	Precision assemblers, metal
533	Miscellaneous electrical and electronic equipment repairers	637-642	Machinists
		639-642	Machinist apprentices
534	Heating, air conditioning, and refrigeration mechanics	643	Boilermakers
535-552	Miscellaneous Mechanics and Repairers	644	Precision grinders, filers, and tool sharpeners
535	Camera, watch, and musical instrument repairers	645	Patternmakers and model makers, metal
536-537	Locksmiths and safe repairers	646	Lay-out workers
538	Office machine repairers	647-648	Precious stones and metals workers (Jewelers)
539-542	Mechanical controls and valve repairers	649-652	Engravers, metal
543	Elevator installers and repairers	653-654	Sheet metal workers
544-546	Millwrights	654	Sheet metal worker apprentices
547-548	Specified mechanics and repairers, n.e.c.	655	Miscellaneous precision metal workers
549-552	Not specified mechanics and repairers	656-665	Precision Woodworking Occupations
		656	Patternmakers and model makers, wood
553-612	Construction Trades	657	Cabinet makers and bench carpenters
		658	Furniture and wood finishers
553-562	Supervisors, Construction Occupations	659-665	Miscellaneous precision woodworkers
553	Supervisors, brickmasons, stonemasons, and tile setters	666-674	Precision Textile, Apparel, and Furnishings
554	Supervisors, carpenters and related workers		Machine Workers
555	Supervisors, electricians and power transmission installers	666	Dressmakers
		667	Tailors
		668	Upholsterers
		669-673	Shoe repairers

674	Miscellaneous precision apparel and fabric workers	739-742	Knitting, looping, taping, and weaving machine operators
675-685	Precision Workers, Assorted Materials	743	Textile cutting machine operators
675	Hand molders and shapers, except jewelers	744	Textile sewing machine operators
676	Patternmakers, lay-out workers, and cutters	745-746	Shoe machine operators
677	Optical goods workers	747	Pressing machine operators
678	Dental laboratory and medical appliance technicians	748	Laundering and dry cleaning machine operators
679-682	Bookbinders	749-752	Miscellaneous textile machine operators
683	Electrical and electronic equipment assemblers	753-782	Machine Operators, Assorted Materials
684-685	Miscellaneous precision workers, n.e.c.	753	Cementing and gluing machine operators
686-688	Precision Food Production Occupations	754	Packaging and filling machine operators
686	Butchers and meat cutters	755	Extruding and forming machine operators
687	Bakers	756	Mixing and blending machine operators
688	Food batchmakers	757	Separating, filtering, and clarifying machine operators
689-693	Precision Inspectors, Testers, and Related Workers	758	Compressing and compacting machine operators
689-692	Inspectors, testers, and graders	759-762	Painting and paint spraying machine operators
693	Adjusters and calibrators	763	Roasting and baking machine operators, food
694-702	Plant and System Operators	764	Washing, cleaning, and pickling machine operators
694	Water and sewage treatment plant operators	765	Folding machine operators
695	Power plant operators	766-767	Furnace, kiln, and oven operators, except food
696-698	Stationary engineers	768	Crushing and grinding machine operators
699-702	Miscellaneous plant and system operators	769-772	Slicing and cutting machine operators
703-902	OPERATORS, FABRICATORS, AND LABORERS	773	Motion picture projectionists
703-802	Machine Operators, Assemblers, and Inspectors	774-776	Photographic process machine operators
703-782	Machine Operators and Tenders, Except Precision	777-778	Miscellaneous machine operators, n.e.c.
703-716	Metal Working and Plastic Working Machine Operators	779-782	Machine operators, not specified
703	Lathe and turning machine set-up operators	783-795	Fabricators, Assemblers, and Hand Working Occupations
704	Lathe and turning machine operators	783	Welders and cutters
705	Milling and planing machine operators	784	Solderers and brazers
706	Punching and stamping press machine operators	785	Assemblers
707	Rolling machine operators	786	Hand cutting and trimming occupations
708	Drilling and boring machine operators	787-788	Hand molding, casting, and forming occupations
709-712	Grinding, abrading, buffing, and polishing machine operators	789-792	Hand painting, coating, and decorating occupations
713	Forging machine operators	793-794	Hand engraving and printing occupations
714	Numerical control machine operators	795	Miscellaneous hand working occupations
715-716	Miscellaneous metal, plastic, stone, and glass working machine operators	796-802	Production Inspectors, Testers, Samplers, and Weighers
717-718	Fabricating machine operators, n.e.c.	796	Production inspectors, checkers, and examiners
719-725	Metal and Plastic Processing Machine Operators	797	Production testers
719-722	Molding and casting machine operators	798	Production samplers and weighers
723	Metal plating machine operators	799-802	Graders and sorters, except agricultural
724	Heat treating equipment operators	803-863	Transportation and Material Moving Occupations
725	Miscellaneous metal and plastic processing machine operators	803-822	Motor Vehicle Operators
726-733	Woodworking Machine Operators	803	Supervisors, motor vehicle operators
726	Wood lathe, routing, and planing machine operators	804-805	Truck drivers
727	Sawing machine operators	806-807	Driver-sales workers
728	Shaping and joining machine operators	808	Bus drivers
729-732	Nailing and tacking machine operators	809-812	Taxicab drivers and chauffeurs
733	Miscellaneous woodworking machine operators	813	Parking lot attendants
734-737	Printing Machine Operators	814-822	Motor transportation occupations, n.e.c.
734	Printing press operators	823-842	Transportation Occupations, Except Motor Vehicles
735	Photoengravers and lithographers	823-827	Rail Transportation Occupations
736	Typesetters and compositors	823	Railroad conductors and yardmasters
737	Miscellaneous printing machine operators	824	Locomotive operating occupations
738-752	Textile, Apparel, and Furnishings Machine Operators	825	Railroad brake, signal, and switch operators
738	Winding and twisting machine operators	826-827	Rail vehicle operators, n.e.c.
		828-842	Water Transportation Occupations
		828	Ship captains and mates, except fishing boats
		829-832	Sailors and deckhands
		833	Marine engineers
		834-842	Bridge, lock, and lighthouse tenders

843-863 Material Moving Equipment Operators
843 Supervisors, material moving equipment operators
844 Operating engineers
845-847 Longshore equipment operators
848 Hoist and winch operators
849-852 Crane and tower operators
853-854 Excavating and loading machine operators
855 Grader, dozer, and scraper operators
856-858 Industrial truck and tractor equipment operators
859-863 Miscellaneous material moving equipment operators

864-902 Handlers, Equipment Cleaners, Helpers, and Laborers

864 Supervisors, handlers, equipment cleaners, and laborers, n.e.c.
865 Helpers, mechanics, and repairers
866-868 Helpers, Construction, and Extractive Occupations
866 Helpers, construction trades
867 Helpers, surveyor
868 Helpers, extractive occupations
869-873 Construction laborers
874 Production helpers
875-884 Freight, Stock, and Material Handlers
875 Garbage collectors
876 Stevedores
877 Stock handlers and baggers
878-882 Machine feeders and offbearers
883-884 Freight, stock, and material handlers, n.e.c.
885-886 Garage and service station related occupations
887 Vehicle washers and equipment cleaners
888 Hand packers and packagers
889-902 Laborers, except construction

903-908 MILITARY OCCUPATIONS (Includes only uniquely military occupations.

Other Armed Forces members are coded to civilian occupations.)

903 Commissioned officers and warrant officers
904 Non-commissioned officers and other enlisted personnel
905-908 Military occupation, rank not specified

909-999 EXPERIENCED UNEMPLOYED NOT CLASSIFIED BY OCCUPATION

909-999 Unemployed, last worked 1984 or earlier

APPENDIX 2

List of Grouped Occupations

000-003	Legislators
004	Chief executives and general administrators, public administration
005	Administrators and officials, public administration
006	Administrators, protective services
007	Financial managers
008	Personnel and labor relations managers
009-012	Purchasing managers
013	Managers, marketing, advertising, and public relations
014	Administrators, education and related fields
015	Managers, medicine and health
016	Postmasters and mail superintendents
017	Managers, food serving and lodging establishments
018	Managers, properties and real estate
019-020	Funeral directors
021	Managers, service organizations, n.e.c.
022	Managers and administrators, n.e.c.
023-042	Management Related Occupations
043-063	Engineers, Architects, and Surveyors
064-068	Mathematical and Computer Scientists
069-083	Natural Scientists
084-094	Health Diagnosing Occupations
095-112	Health Assessment and Treating Occupations
113-154	Teachers, Postsecondary
155-162	Teachers, Except Postsecondary
163	Counselors, Educational and Vocational
164-165	Librarians, Archivists, and Curators
166-173	Social Scientists and Urban Planners
174-177	Social, Recreation, and Religious Workers
178-182	Lawyers and Judges
183-202	Writers, Artists, Entertainers, and Athletes
203-212	Health Technologists and Technicians
213-242	Technologists and Technicians, Except Health
243-252	Supervisors and Proprietors, Sales Occupations
253-257	Sales Representatives, Finance and Business Services
258-262	Sales Representatives, Commodities, Except Retail
263-282	Sales Workers, Retail and Personal Services
283-302	Sales Related Occupations
303-307	Supervisors, Administrative Support Occupations
308-312	Computer Equipment Operators
313-315	Secretaries, Stenographers, and Typists
316-324	Information Clerks
325-336	Records Processing Occupations, Except Financial
337-344	Financial Records Processing Occupations
345-347	Duplicating, Mail and Other Office Machine Operators
348-353	Communications Equipment Operators
354-358	Mail and Message Distributing Occupations
359-374	Material Recording, Scheduling, and Distributing Clerks
375-378	Adjusters and Investigators
379-402	Miscellaneous Administrative Support Occupations
403-412	Private Household Occupations
413-415	Supervisors, Protective Service Occupations
416-417	Firefighting and Fire Prevention Occupations

418-424	Police and Detectives
425-432	Guards
433-444	Food Preparation and Service Occupations
445-447	Health Service Occupations
448-455	Cleaning and Building Service Occupations, Except Household
456-472	Personal Service Occupations
473-476	Farm Operators and Managers
477-493	Other Agricultural and Related Occupations
494-496	Forestry and Logging Occupations
497-502	Fishers, Hunters, and Trappers
503-504	Supervisors, mechanics and repairers
505-552	Mechanics and Repairers, Except Supervisors
553-562	Supervisors, Construction Occupations
563-612	Construction Trades, Except Supervisors
613-627	Extractive Occupations
628-702	Precision Production Occupations
703-782	Machine Operators and Tenders, Except Precision
783-795	Fabricators, Assemblers, and Hand Working Occupations
796-802	Production Inspectors, Testers, Samplers, and Weighers
803-822	Motor Vehicle Operators
823-842	Transportation Occupations, Except Motor Vehicles
843-863	Material Moving Equipment Operators
864-902	Handlers, Equipment Cleaners, Helpers, and Laborers
903-908	MILITARY OCCUPATIONS (Includes only uniquely military occupations. Other Armed Forces members are coded to civilian occupations.)
909-999	Unemployed, last worked 1984 or earlier

APPENDIX 3

The following are the specific criteria used in the queries.

Top Occupations

The census asked for each person's occupation and their income, and that information was queried to determine the largest occupations in Nevada. The people who reported their income was 0 were not included in the count.

General Information

A table was made (hereafter referred to as TABLEOcc) containing the primary key column for everyone in the specific occupation which was selected. From that data, the information in each age group was counted to find how many were female, the average schooling, and the average income. The income was what they individually reported was their wages or salary income in 1989.

TABLEOcc was queried for each race according to age group. Then, the information in TABLEOcc was queried for how many were of Hispanic origin in each age group. Note that Hispanic origin is not classified as a race.

To obtain all of the percentages in this section, the specific number of people obtained in the age group was divided by the total number of people in the specific age group.

Family Information

The information in TABLEOcc was queried for the marital status according to age group. To obtain the percentages the number reported for the specific marital status was divided by the total number reported in the age group.

Of those in TABLEOcc who listed themselves as the householders, their information was queried for the family type in that household. To obtain the percentages the number in the specific family type and age group was divided by the number of total householders in the age group.

For the average number of children per household, the information in TABLEOcc was queried for the householders, and the number of children they reported were in their household which included natural born, adopted, and step children. The number of children in each age group was summed, and then the summed value was divided by the total number of householders in each age group.

The information in TABLEOcc was queried for the householders, and then their information was queried to find out how many workers were in their families. NA means the house was reported as a non-family household. The percentages were obtained by dividing the workers reported in each age group by the number of householders in each age group.

Transportation Information

The data in TABLEOcc was queried for the different means of transportation to work by age group. NA includes those (according to the census report) who are not a worker, not in the labor force, unemployed, employed with a job but not at work, and armed forces with a job but not at work. The percentages were obtained by dividing the number in each age group and specific means of transportation by the total number of people in the age group.

In the census, the employees reported how long it took them to travel to work. That information was queried to find the average of the time it took to travel to work (excluding the ones who reported their transportation as NA and Worked at Home) for each age group.

Household Information

The records in TABLEOcc were queried for the people who reported themselves as the householder. The percentages were obtained by dividing the number of householders in each age group by the total number of people in the age group.

The householders in TABLEOcc were queried for the average of what they reported as their household income.

The householders in TABLEOcc were queried for their Tenure status. The percentages were obtained by dividing the type of tenure in each age group by the number of householders in each age group.

The householders in TABLEOcc who reported they rented for cash rent were queried for their average monthly rent.

The householders in TABLEOcc who reported they owned with a mortgage or loan or owned free and clear were queried for their average property value.

The householders in TABLEOcc who reported they had a mortgage deed of trust or similar debt, or a contract to purchase were queried for their average monthly mortgage payment.

The householders in TABLEOcc were queried for their mortgage status, and the information was reported in percentages by dividing the specific mortgage status for each age group by the number of householders in each age group. NA refers to those dwellings which are not owned or being bought, or not a one family house, mobile home, or condo.